

Product datasheet for **TA810614S**

CD10 (MME) Mouse Monoclonal Antibody [Clone ID: OTI2A4]

Product data:

Product Type:	Primary Antibodies
Clone Name:	OTI2A4
Applications:	IHC, WB
Recommended Dilution:	WB 1:500, IHC 1:500
Reactivity:	Human, Mouse, Rat
Host:	Mouse
Isotype:	IgG1
Clonality:	Monoclonal
Immunogen:	Human recombinant protein fragment corresponding to amino acids 411-750 of human MME (NP_009219) produced in E.coli.
Formulation:	PBS (pH 7.3) containing 1% BSA, 50% glycerol and 0.02% sodium azide.
Concentration:	1 mg/ml
Purification:	Purified from mouse ascites fluids or tissue culture supernatant by affinity chromatography (protein A/G)
Conjugation:	Unconjugated
Storage:	Store at -20°C as received.
Stability:	Stable for 12 months from date of receipt.
Gene Name:	membrane metallo-endopeptidase
Database Link:	NP_009219 Entrez Gene 17380 Mouse Entrez Gene 24590 Rat Entrez Gene 4311 Human P08473



[View online »](#)

Background:

This gene encodes a common acute lymphocytic leukemia antigen that is an important cell surface marker in the diagnosis of human acute lymphocytic leukemia (ALL). This protein is present on leukemic cells of pre-B phenotype, which represent 85% of cases of ALL. This protein is not restricted to leukemic cells, however, and is found on a variety of normal tissues. It is a glycoprotein that is particularly abundant in kidney, where it is present on the brush border of proximal tubules and on glomerular epithelium. The protein is a neutral endopeptidase that cleaves peptides at the amino side of hydrophobic residues and inactivates several peptide hormones including glucagon, enkephalins, substance P, neurotensin, oxytocin, and bradykinin. This gene, which encodes a 100-kD type II transmembrane glycoprotein, exists in a single copy of greater than 45 kb. The 5' untranslated region of this gene is alternatively spliced, resulting in four separate mRNA transcripts. The coding region is not affected by alternative splicing. [provided by RefSeq, Jul 2008]

Synonyms:

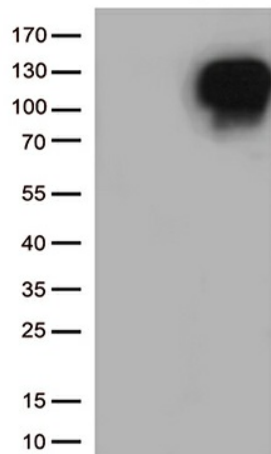
CALLA; CD10; CMT2T; NEP; SCA43; SFE

Protein Families:

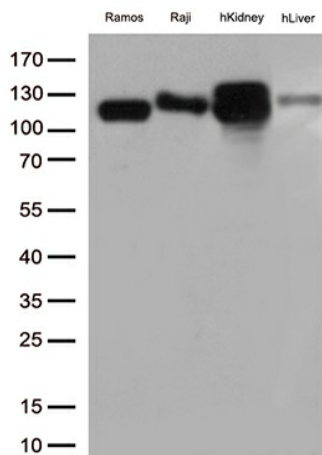
Druggable Genome, Protease, Transmembrane

Protein Pathways:

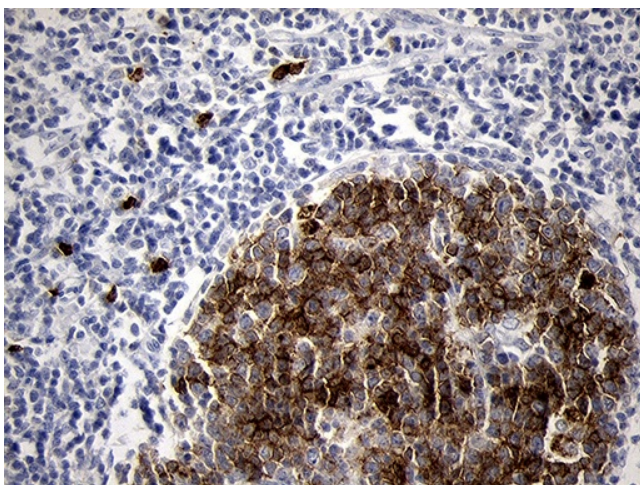
Alzheimer's disease, Hematopoietic cell lineage, Renin-angiotensin system

Product images:

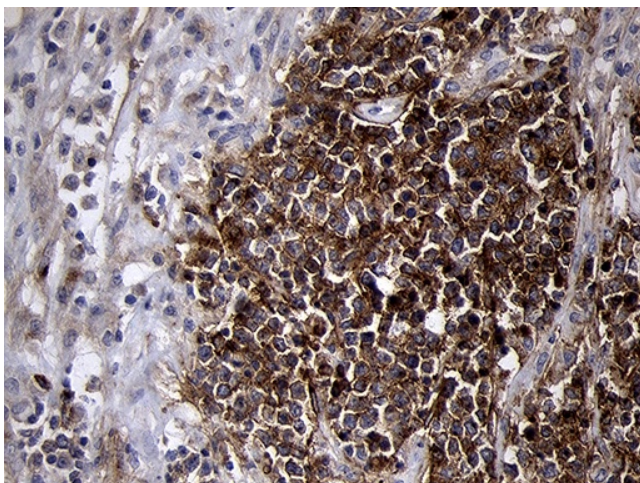
HEK293T cells were transfected with the pCMV6-ENTRY control (Left lane) or pCMV6-ENTRY MME ([RC223013], Right lane) cDNA for 48 hrs and lysed. Equivalent amounts of cell lysates (5 ug per lane) were separated by SDS-PAGE and immunoblotted with anti-MME (1:2000).



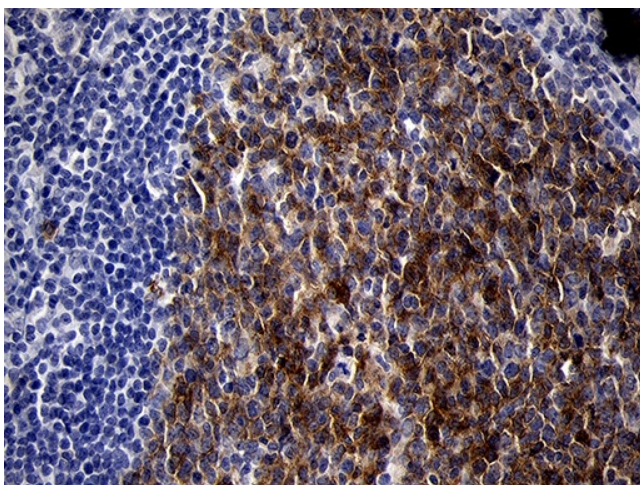
Western blot analysis of extracts (35ug) from 2 cell lines and 2 tissues lysates by using anti-MME monoclonal antibody (1:500).



Immunohistochemical staining of paraffin-embedded Human lymph node tissue within the normal limits using anti-MME mouse monoclonal antibody. (Heat-induced epitope retrieval by 1mM EDTA in 10mM Tris buffer (pH8.5) at 120°C for 3min, [TA810614]) (1:500)



Immunohistochemical staining of paraffin-embedded Human lymphoma tissue using anti-MME mouse monoclonal antibody. (Heat-induced epitope retrieval by 1mM EDTA in 10mM Tris buffer (pH8.5) at 120°C for 3min, [TA810614]) (1:500)



Immunohistochemical staining of paraffin-embedded Human tonsil within the normal limits using anti-MME mouse monoclonal antibody. (Heat-induced epitope retrieval by 1mM EDTA in 10mM Tris buffer (pH8.5) at 120°C for 3min, [TA810614] (1:500))