

## Product datasheet for **TA810598M**

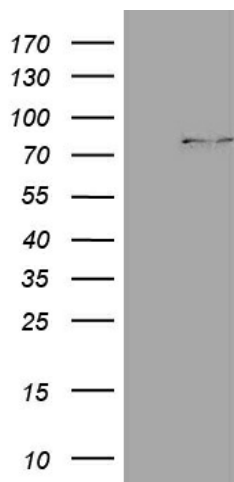
### CPT1B Mouse Monoclonal Antibody [Clone ID: OTI6B8]

#### Product data:

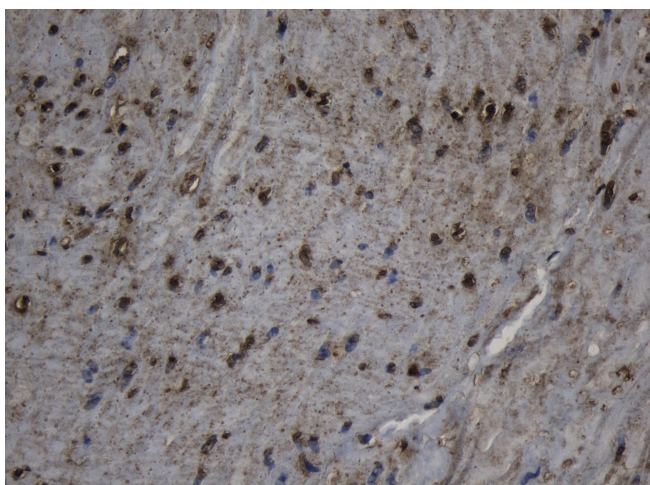
Product Type:	Primary Antibodies
Clone Name:	OTI6B8
Applications:	IHC, WB
Recommended Dilution:	WB 1:2000, IHC 1:500
Reactivity:	Human, Mouse, Rat
Host:	Mouse
Isotype:	IgG2b
Clonality:	Monoclonal
Immunogen:	Human recombinant protein fragment corresponding to amino acids 187-440 of human CPT1B (NP_004368) produced in E.coli.
Formulation:	PBS (pH 7.3) containing 1% BSA, 50% glycerol and 0.02% sodium azide.
Concentration:	1 mg/ml
Purification:	Purified from mouse ascites fluids or tissue culture supernatant by affinity chromatography (protein A/G)
Conjugation:	Unconjugated
Storage:	Store at -20°C as received.
Stability:	Stable for 12 months from date of receipt.
Predicted Protein Size:	87.6 kDa
Gene Name:	carnitine palmitoyltransferase 1B
Database Link:	<a href="#">NP_004368</a> <a href="#">Entrez Gene 12895 Mouse</a> <a href="#">Entrez Gene 25756 Rat</a> <a href="#">Entrez Gene 1375 Human</a> <a href="#">Q92523</a>
Synonyms:	CPT1-M; CPT1M; CPTI; CPTI-M; M-CPT1; MCCPT1; MCPT1
Protein Families:	Druggable Genome, Transmembrane
Protein Pathways:	Adipocytokine signaling pathway, Fatty acid metabolism, PPAR signaling pathway


[View online »](#)

## Product images:



HEK293T cells were transfected with the pCMV6-ENTRY control (Left lane) or pCMV6-ENTRY CPT1B ([RC217297], Right lane) cDNA for 48 hrs and lysed. Equivalent amounts of cell lysates (5 ug per lane) were separated by SDS-PAGE and immunoblotted with anti-CPT1B (1:2000). Positive lysates [LY418031] (100ug) and [LC418031] (20ug) can be purchased separately from OriGene.



Immunohistochemical staining of paraffin-embedded Human bladder tissue within the normal limits using anti-CPT1B mouse monoclonal antibody. Heat-induced epitope retrieval by EDTA solution buffer pH 8.0 at 120°C for 3 min.