

Product datasheet for **TA810592AM**

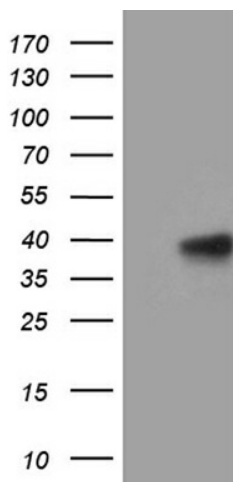
MRPL44 Mouse Monoclonal Antibody (Biotin conjugated) [Clone ID: OTI1A1]

Product data:

Product Type:	Primary Antibodies
Clone Name:	OTI1A1
Applications:	WB
Recommended Dilution:	WB 1:500
Reactivity:	Human, Mouse, Rat
Host:	Mouse
Isotype:	IgG1
Clonality:	Monoclonal
Immunogen:	Full length human recombinant protein of human MRPL44 (NP_075066) produced in E.coli.
Formulation:	PBS (pH 7.3) containing 1% BSA, 50% glycerol and 0.02% sodium azide.
Concentration:	0.5 mg/ml
Purification:	Purified from mouse ascites fluids or tissue culture supernatant by affinity chromatography (protein A/G)
Conjugation:	Biotin
Storage:	Store at -20°C as received.
Stability:	Stable for 12 months from date of receipt.
Predicted Protein Size:	37.4 kDa
Gene Name:	mitochondrial ribosomal protein L44
Database Link:	NP_075066 Entrez Gene 69163 Mouse Entrez Gene 301552 Rat Entrez Gene 65080 Human Q9H9J2
Synonyms:	COXPD16; L44MT; MRP-L44



[View online »](#)

Product images:

HEK293T cells were transfected with the pCMV6-ENTRY control (Left lane) or pCMV6-ENTRY MRPL44 ([RC204081], Right lane) cDNA for 48 hrs and lysed. Equivalent amounts of cell lysates (5 ug per lane) were separated by SDS-PAGE and immunoblotted with anti-MRPL44 (1:500). Positive lysates [LY411453] (100ug) and [LC411453] (20ug) can be purchased separately from OriGene.