

## Product datasheet for TA810590M

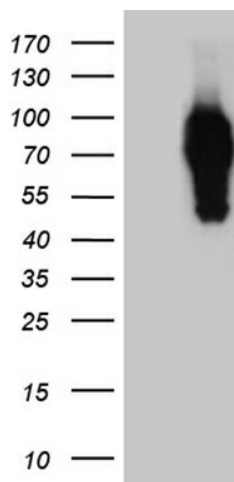
### Granuphilin (SYTL4) Mouse Monoclonal Antibody [Clone ID: OTI3G3]

#### Product data:

Product Type:	Primary Antibodies
Clone Name:	OTI3G3
Applications:	WB
Recommended Dilution:	WB 1:2000
Reactivity:	Human, Mouse, Rat
Host:	Mouse
Isotype:	IgG2a
Clonality:	Monoclonal
Immunogen:	Full length human recombinant protein of human SYTL4 (NP_542775) produced in E.coli.
Formulation:	PBS (pH 7.3) containing 1% BSA, 50% glycerol and 0.02% sodium azide.
Concentration:	1 mg/ml
Purification:	Purified from mouse ascites fluids or tissue culture supernatant by affinity chromatography (protein A/G)
Conjugation:	Unconjugated
Storage:	Store at -20°C as received.
Stability:	Stable for 12 months from date of receipt.
Predicted Protein Size:	75.8 kDa
Gene Name:	synaptotagmin like 4
Database Link:	<a href="#">NP_542775</a> <a href="#">Entrez Gene 27359 Mouse</a> <a href="#">Entrez Gene 140594 Rat</a> <a href="#">Entrez Gene 94121 Human</a> <a href="#">Q96C24</a>
Synonyms:	SLP4


[View online »](#)

## Product images:



HEK293T cells were transfected with the pCMV6-ENTRY control (Left lane) or pCMV6-ENTRY SYTL4 ([RC203842], Right lane) cDNA for 48 hrs and lysed. Equivalent amounts of cell lysates (5 ug per lane) were separated by SDS-PAGE and immunoblotted with anti-SYTL4 (1:2000). Positive lysates [LY409049] (100ug) and [LC409049] (20ug) can be purchased separately from OriGene.