

Product datasheet for **TA810584AM**

Calcineurin A (PPP3CA) Mouse Monoclonal Antibody (Biotin conjugated) [Clone ID: OTI5C6]

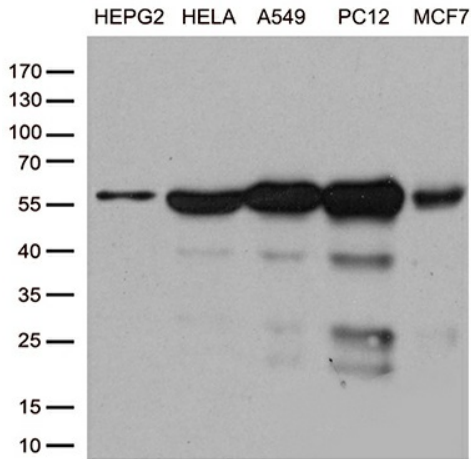
Product data:

Product Type:	Primary Antibodies
Clone Name:	OTI5C6
Applications:	IHC, WB
Recommended Dilution:	WB 1:500, IHC 1:2000
Reactivity:	Human, Rat, Mouse
Host:	Mouse
Isotype:	IgG1
Clonality:	Monoclonal
Immunogen:	Human recombinant protein fragment corresponding to amino acids 2-105 of human PPP3CA (NP_000935) produced in E.coli.
Formulation:	PBS (pH 7.3) containing 1% BSA, 50% glycerol and 0.02% sodium azide.
Concentration:	0.5 mg/ml
Purification:	Purified from mouse ascites fluids or tissue culture supernatant by affinity chromatography (protein A/G)
Conjugation:	Biotin
Storage:	Store at -20°C as received.
Stability:	Stable for 12 months from date of receipt.
Gene Name:	protein phosphatase 3 catalytic subunit alpha
Database Link:	NP_000935 Entrez Gene 19055 Mouse Entrez Gene 24674 Rat Entrez Gene 5530 Human Q08209
Synonyms:	ACCIID; CALN; CALNA; CALNA1; CCN1; CNA1; IECEE; IECEE1; PPP2B
Protein Families:	Druggable Genome, Phosphatase
Protein Pathways:	Alzheimer's disease, Amyotrophic lateral sclerosis (ALS), Apoptosis, Axon guidance, B cell receptor signaling pathway, Calcium signaling pathway, Long-term potentiation, MAPK signaling pathway, Natural killer cell mediated cytotoxicity, Oocyte meiosis, T cell receptor signaling pathway, VEGF signaling pathway, Wnt signaling pathway

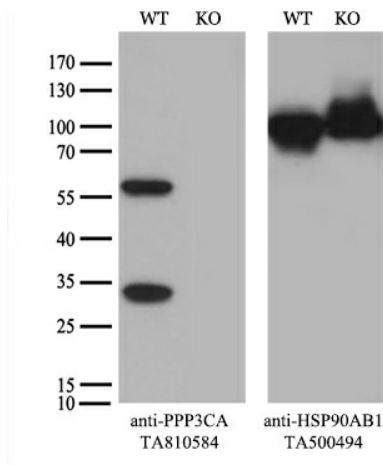


[View online »](#)

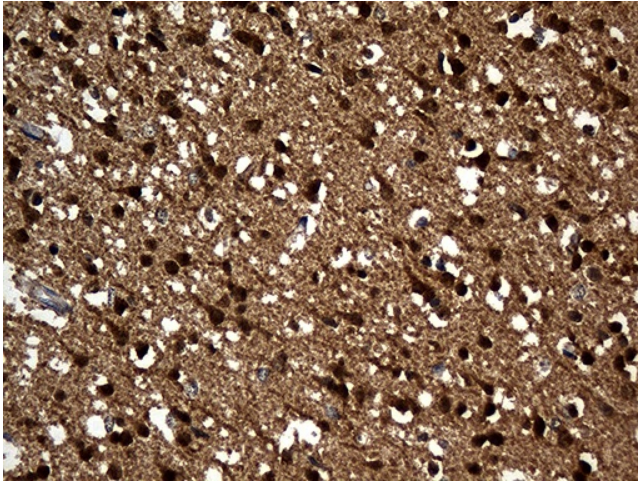
Product images:



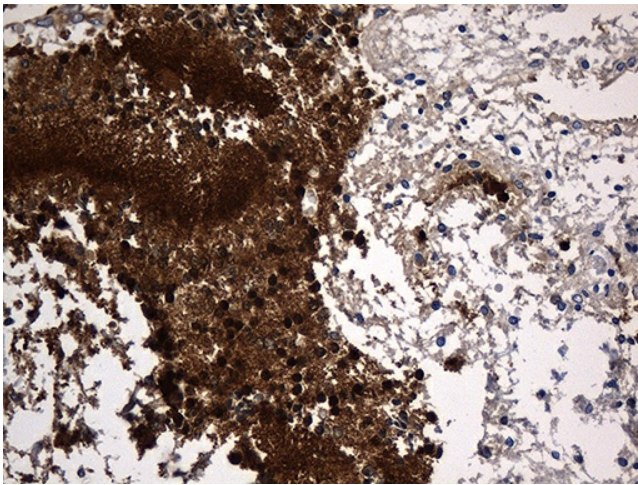
Western blot analysis of extracts (35ug) from cell lines by using anti-PPP3CA monoclonal antibody (1:500).



Equivalent amounts of cell lysates (10 ug per lane) of wild-type HeLa cells (WT, Cat# LC810HELA) and PPP3CA-Knockout HeLa cells (KO, Cat# [LC831038]) were separated by SDS-PAGE and immunoblotted with anti-PPP3CA monoclonal antibody [TA810584] (1:500). Then the blotted membrane was stripped and reprobed with anti-HSP90 antibody as a loading control.



Immunohistochemical staining of paraffin-embedded Human adult brain tissue within the normal limits using anti-PPP3CA mouse monoclonal antibody. (Heat-induced epitope retrieval by 1mM EDTA in 10mM Tris buffer (pH8.5) at 120°C for 3min, [TA810584]) (1:2000)



Immunohistochemical staining of paraffin-embedded Human embryonic cerebellum within the normal limits using anti-PPP3CA mouse monoclonal antibody. (Heat-induced epitope retrieval by 1mM EDTA in 10mM Tris buffer (pH8.5) at 120°C for 3min, [TA810584]) (1:2000)