

Product datasheet for **TA810581**

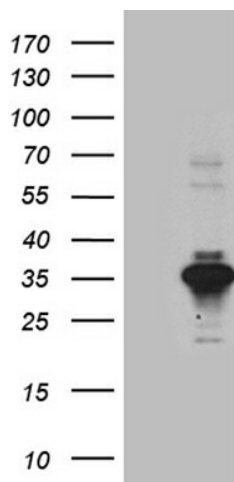
SERPINB8 Mouse Monoclonal Antibody [Clone ID: OTI9B2]

Product data:

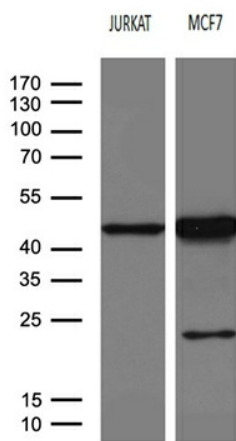
Product Type:	Primary Antibodies
Clone Name:	OTI9B2
Applications:	WB
Recommended Dilution:	WB 1:500~2000
Reactivity:	Human
Host:	Mouse
Isotype:	IgG2b
Clonality:	Monoclonal
Immunogen:	Human recombinant protein fragment corresponding to amino acids 169-374 of human SERPINB8 (NP_001027018) produced in E.coli.
Formulation:	PBS (pH 7.3) containing 1% BSA, 50% glycerol and 0.02% sodium azide.
Concentration:	1 mg/ml
Purification:	Purified from mouse ascites fluids or tissue culture supernatant by affinity chromatography (protein A/G)
Conjugation:	Unconjugated
Storage:	Store at -20°C as received.
Stability:	Stable for 12 months from date of receipt.
Predicted Protein Size:	27.5 kDa
Gene Name:	serpin family B member 8
Database Link:	NP_001027018 Entrez Gene 5271 Human P50452
Synonyms:	CAP2; PI8
Protein Families:	Druggable Genome



[View online »](#)

Product images:

HEK293T cells were transfected with the pCMV6-ENTRY control (Left lane) or pCMV6-ENTRY SERPINB8 ([RC205135], Right lane) cDNA for 48 hrs and lysed. Equivalent amounts of cell lysates (5 ug per lane) were separated by SDS-PAGE and immunoblotted with anti-SERPINB8 (1:2000). Positive lysates [LY422205] (100ug) and [LC422205] (20ug) can be purchased separately from OriGene.



Western blot analysis of extracts (35ug) from 2 different cell lines by using anti-SERPINB8 monoclonal antibody (1:500).