

## Product datasheet for **TA810580AM**

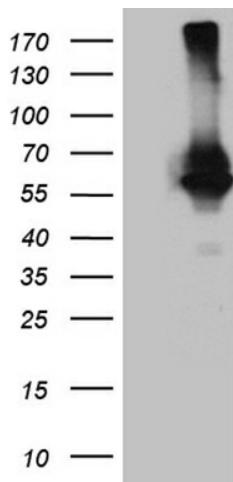
### **RNF149 Mouse Monoclonal Antibody (Biotin conjugated) [Clone ID: OTI8D7]**

#### **Product data:**

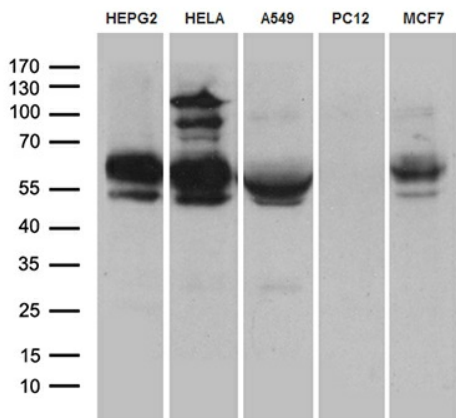
<b>Product Type:</b>	Primary Antibodies
<b>Clone Name:</b>	OTI8D7
<b>Applications:</b>	WB
<b>Recommended Dilution:</b>	WB 1:500~2000
<b>Reactivity:</b>	Human
<b>Host:</b>	Mouse
<b>Isotype:</b>	IgG1
<b>Clonality:</b>	Monoclonal
<b>Immunogen:</b>	Human recombinant protein fragment corresponding to amino acids 250-383 of human RNF149 (NP_775918) produced in E.coli.
<b>Formulation:</b>	PBS (pH 7.3) containing 1% BSA, 50% glycerol and 0.02% sodium azide.
<b>Concentration:</b>	0.5 mg/ml
<b>Purification:</b>	Purified from mouse ascites fluids or tissue culture supernatant by affinity chromatography (protein A/G)
<b>Conjugation:</b>	Biotin
<b>Storage:</b>	Store at -20°C as received.
<b>Stability:</b>	Stable for 12 months from date of receipt.
<b>Predicted Protein Size:</b>	43 kDa
<b>Gene Name:</b>	ring finger protein 149
<b>Database Link:</b>	<a href="#">NP_775918</a> <a href="#">Entrez Gene 284996 Human</a> <a href="#">Q8NC42</a>
<b>Synonyms:</b>	DNAPTP2
<b>Protein Families:</b>	Druggable Genome, Transmembrane



[View online »](#)

**Product images:**


HEK293T cells were transfected with the pCMV6-ENTRY control (Left lane) or pCMV6-ENTRY RNF149 ([RC207979], Right lane) cDNA for 48 hrs and lysed. Equivalent amounts of cell lysates (5 ug per lane) were separated by SDS-PAGE and immunoblotted with anti-RNF14. Positive lysates [LY406531] (100ug) and [LC406531] (20ug) can be purchased separately from OriGene.



Western blot analysis of extracts (35ug) from 5 cell lines by using anti-RNF149 monoclonal antibody. (1:2000) (1:500)