

Product datasheet for **TA810579AM**

Granuphilin (SYTL4) Mouse Monoclonal Antibody (Biotin conjugated) [Clone ID: OT11H8]

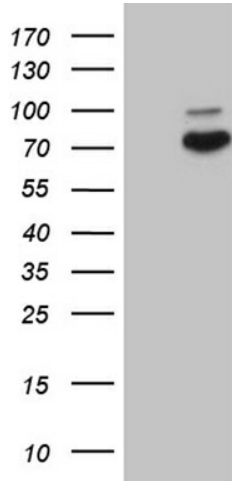
Product data:

Product Type:	Primary Antibodies
Clone Name:	OT11H8
Applications:	WB
Recommended Dilution:	WB 1:2000
Reactivity:	Human, Mouse, Rat
Host:	Mouse
Isotype:	IgG1
Clonality:	Monoclonal
Immunogen:	Full length human recombinant protein of human SYTL4 (NP_542775) produced in E.coli.
Formulation:	PBS (pH 7.3) containing 1% BSA, 50% glycerol and 0.02% sodium azide.
Concentration:	0.5 mg/ml
Purification:	Purified from mouse ascites fluids or tissue culture supernatant by affinity chromatography (protein A/G)
Conjugation:	Biotin
Storage:	Store at -20°C as received.
Stability:	Stable for 12 months from date of receipt.
Predicted Protein Size:	75.8 kDa
Gene Name:	synaptotagmin like 4
Database Link:	NP_542775 Entrez Gene 27359 Mouse Entrez Gene 140594 Rat Entrez Gene 94121 Human Q96C24
Synonyms:	SLP4



[View online »](#)

Product images:



HEK293T cells were transfected with the pCMV6-ENTRY control (Left lane) or pCMV6-ENTRY SYTL4 ([RC203842], Right lane) cDNA for 48 hrs and lysed. Equivalent amounts of cell lysates (5 ug per lane) were separated by SDS-PAGE and immunoblotted with anti-SYTL4 (1:2000). Positive lysates [LY409049] (100ug) and [LC409049] (20ug) can be purchased separately from OriGene.