

## Product datasheet for **TA810573AM**

### MRPL44 Mouse Monoclonal Antibody (Biotin conjugated) [Clone ID: OTI3H5]

#### Product data:

Product Type:	Primary Antibodies
Clone Name:	OTI3H5
Applications:	IHC, WB
Recommended Dilution:	WB 1:500, IHC 1:500
Reactivity:	Human, Mouse, Rat
Host:	Mouse
Isotype:	IgG2a
Clonality:	Monoclonal
Immunogen:	Full length human recombinant protein of human MRPL44 (NP_075066) produced in E.coli.
Formulation:	PBS (pH 7.3) containing 1% BSA, 50% glycerol and 0.02% sodium azide.
Concentration:	0.5 mg/ml
Purification:	Purified from mouse ascites fluids or tissue culture supernatant by affinity chromatography (protein A/G)
Conjugation:	Biotin
Storage:	Store at -20°C as received.
Stability:	Stable for 12 months from date of receipt.
Gene Name:	mitochondrial ribosomal protein L44
Database Link:	<a href="#">NP_075066</a> <a href="#">Entrez Gene 69163 Mouse</a> <a href="#">Entrez Gene 301552 Rat</a> <a href="#">Entrez Gene 65080 Human</a> <a href="#">Q9H9J2</a>



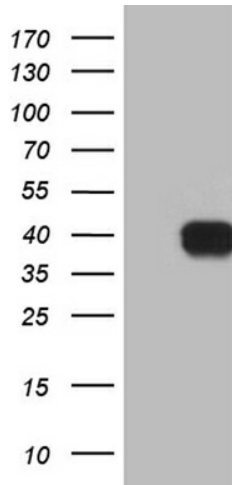
[View online »](#)

**Background:**

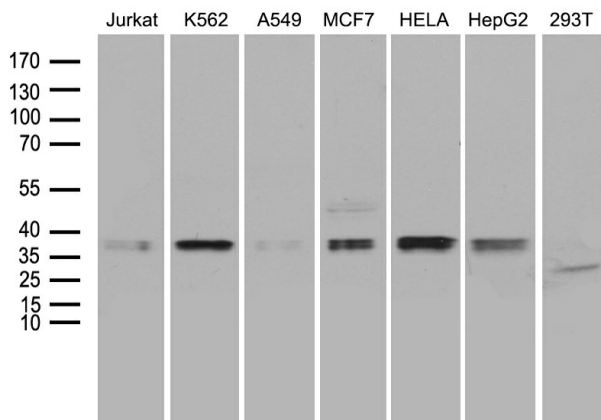
Mammalian mitochondrial ribosomal proteins are encoded by nuclear genes and help in protein synthesis within the mitochondrion. Mitochondrial ribosomes (mitoribosomes) consist of a small 28S subunit and a large 39S subunit. They have an estimated 75% protein to rRNA composition compared to prokaryotic ribosomes, where this ratio is reversed. Another difference between mammalian mitoribosomes and prokaryotic ribosomes is that the latter contain a 5S rRNA. Among different species, the proteins comprising the mitoribosome differ greatly in sequence, and sometimes in biochemical properties, which prevents easy recognition by sequence homology. This gene encodes a 39S subunit protein. [provided by RefSeq, Jul 2008]

**Synonyms:**

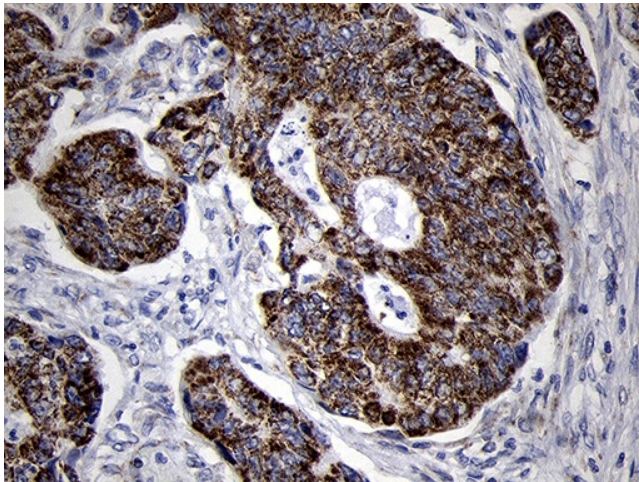
COXPD16; L44MT; MRP-L44

**Product images:**


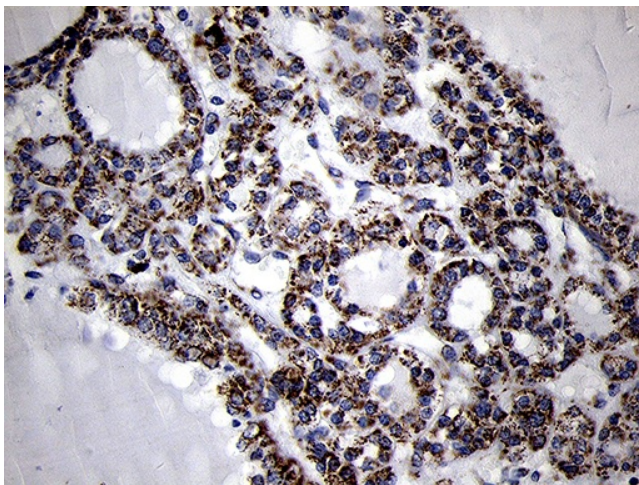
HEK293T cells were transfected with the pCMV6-ENTRY control (Cat# [PS100001], Left lane) or pCMV6-ENTRY MRPL44 (Cat# [RC204081], Right lane) cDNA for 48 hrs and lysed. Equivalent amounts of cell lysates (5 ug per lane) were separated by SDS-PAGE and immunoblotted with anti-MRPL44 (Cat# [TA810573])(1:500). Positive lysates [LY411453] (100ug) and [LC411453] (20ug) can be purchased separately from OriGene.



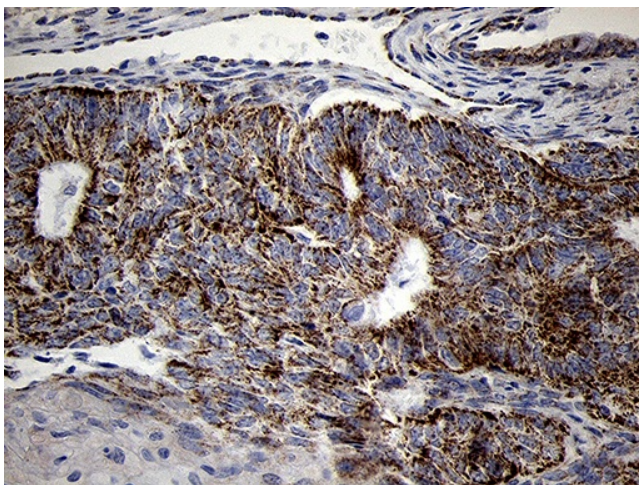
Western blot analysis of extracts (35ug) from 7 different cell lines by using anti-MRPL44 monoclonal antibody (1:500).



Immunohistochemical staining of paraffin-embedded Adenocarcinoma of Human colon tissue using anti-MRPL44 mouse monoclonal antibody. (Heat-induced epitope retrieval by 1mM EDTA in 10mM Tris buffer (pH8.5) at 120°C for 3min, [TA810573]) (1:500)

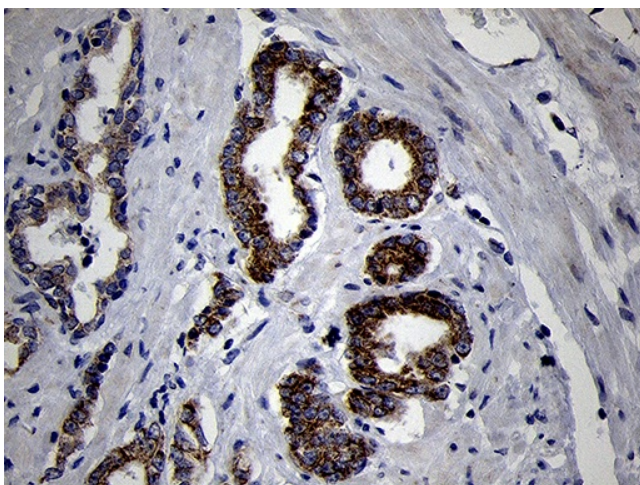


Immunohistochemical staining of paraffin-embedded Carcinoma of Human thyroid tissue using anti-MRPL44 mouse monoclonal antibody. (Heat-induced epitope retrieval by 1mM EDTA in 10mM Tris buffer (pH8.5) at 120°C for 3min, [TA810573]) (1:500)

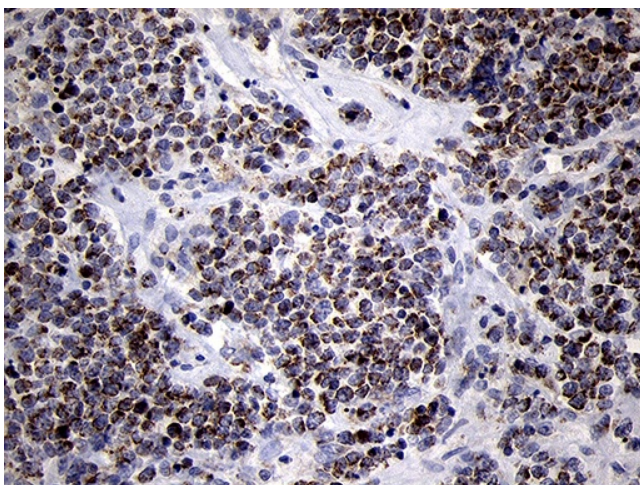


Immunohistochemical staining of paraffin-embedded Adenocarcinoma of Human endometrium tissue using anti-MRPL44 mouse monoclonal antibody. (Heat-induced epitope retrieval by 1mM EDTA in 10mM Tris buffer (pH8.5) at 120°C for 3min, [TA810573]) (1:500)

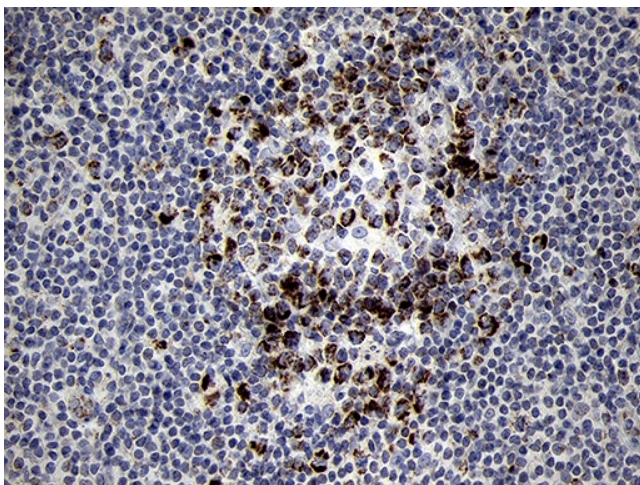




Immunohistochemical staining of paraffin-embedded Carcinoma of Human prostate tissue using anti-MRPL44 mouse monoclonal antibody. (Heat-induced epitope retrieval by 1mM EDTA in 10mM Tris buffer (pH8.5) at 120°C for 3min, [TA810573]) (1:500)



Immunohistochemical staining of paraffin-embedded Human lymphoma tissue using anti-MRPL44 mouse monoclonal antibody. (Heat-induced epitope retrieval by 1mM EDTA in 10mM Tris buffer (pH8.5) at 120°C for 3min, [TA810573]) (1:500)



Immunohistochemical staining of paraffin-embedded Human tonsil within the normal limits using anti-MRPL44 mouse monoclonal antibody. (Heat-induced epitope retrieval by 1mM EDTA in 10mM Tris buffer (pH8.5) at 120°C for 3min, [TA810573]) (1:500)