

Product datasheet for **TA810572M**

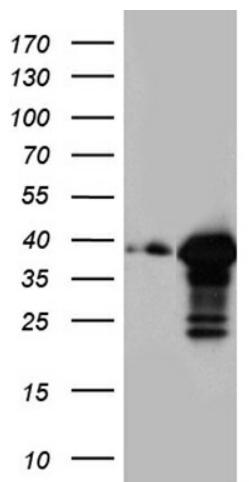
CDX1 Mouse Monoclonal Antibody [Clone ID: OTI1C7]

Product data:

Product Type:	Primary Antibodies
Clone Name:	OTI1C7
Applications:	WB
Recommended Dilution:	WB 1:2000
Reactivity:	Human, Mouse
Host:	Mouse
Isotype:	IgG1
Clonality:	Monoclonal
Immunogen:	Full length human recombinant protein of human CDX1 (NP_001795) produced in E.coli.
Formulation:	PBS (pH 7.3) containing 1% BSA, 50% glycerol and 0.02% sodium azide.
Concentration:	1 mg/ml
Purification:	Purified from mouse ascites fluids or tissue culture supernatant by affinity chromatography (protein A/G)
Conjugation:	Unconjugated
Storage:	Store at -20°C as received.
Stability:	Stable for 12 months from date of receipt.
Predicted Protein Size:	28 kDa
Gene Name:	caudal type homeobox 1
Database Link:	NP_001795 Entrez Gene 12590 Mouse Entrez Gene 1044 Human P47902
Synonyms:	MGC116915
Protein Families:	Transcription Factors



[View online »](#)

Product images:

HEK293T cells were transfected with the pCMV6-ENTRY control (Left lane) or pCMV6-ENTRY CDX1 ([RC220111], Right lane) cDNA for 48 hrs and lysed. Equivalent amounts of cell lysates (5 ug per lane) were separated by SDS-PAGE and immunoblotted with anti-CDX1 (1:2000). Positive lysates [LY419740] (100ug) and [LC419740] (20ug) can be purchased separately from OriGene.