

Product datasheet for **TA810569S**

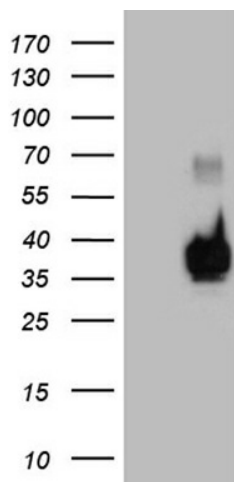
RNASE11 Mouse Monoclonal Antibody [Clone ID: OTI11E11]

Product data:

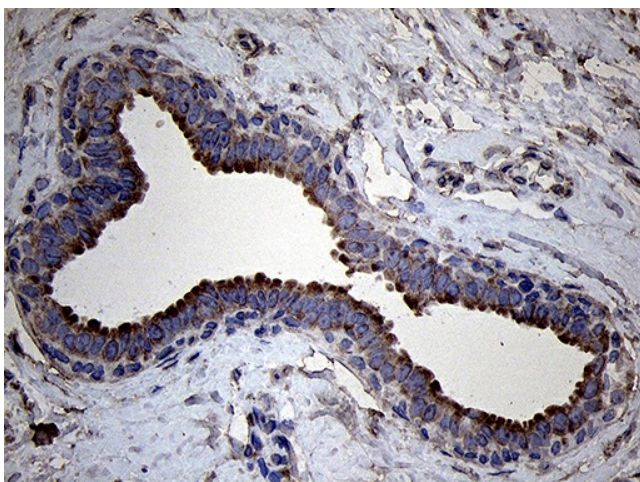
Product Type:	Primary Antibodies
Clone Name:	OTI11E11
Applications:	IHC, WB
Recommended Dilution:	WB 1:2000, IHC 1:500
Reactivity:	Human
Host:	Mouse
Isotype:	IgG2b
Clonality:	Monoclonal
Immunogen:	Full length human recombinant protein of human RNASE11 (NP_660293) produced in E.coli.
Formulation:	PBS (pH 7.3) containing 1% BSA, 50% glycerol and 0.02% sodium azide.
Concentration:	1 mg/ml
Purification:	Purified from mouse ascites fluids or tissue culture supernatant by affinity chromatography (protein A/G)
Conjugation:	Unconjugated
Storage:	Store at -20°C as received.
Stability:	Stable for 12 months from date of receipt.
Gene Name:	ribonuclease A family member 11 (inactive)
Database Link:	NP_660293 Entrez Gene 122651 Human Q8TAA1
Synonyms:	C14orf6; HEL-S-84p; RAJ1
Protein Families:	Secreted Protein



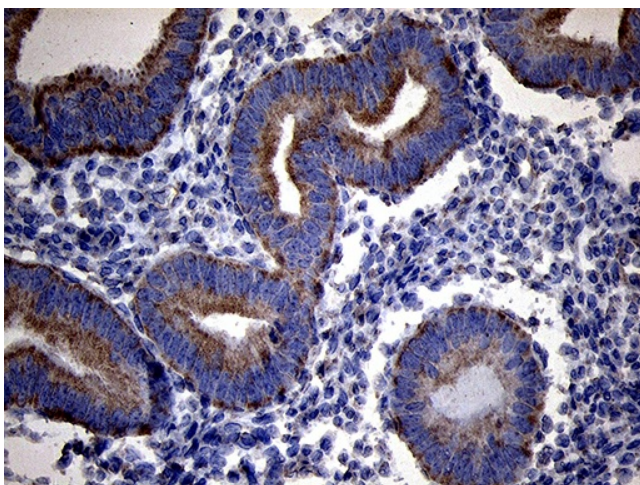
[View online »](#)

Product images:

HEK293T cells were transfected with the pCMV6-ENTRY control (Left lane) or pCMV6-ENTRY RNASE11 ([RC206219], Right lane) cDNA for 48 hrs and lysed. Equivalent amounts of cell lysates (5 ug per lane) were separated by SDS-PAGE and immunoblotted with anti-RNASE11 (1:2000). Positive lysates [LY407984] (100ug) and [LC407984] (20ug) can be purchased separately from OriGene.



Immunohistochemical staining of paraffin-embedded Human breast tissue within the normal limits using anti-RNASE11 mouse monoclonal antibody. (Heat-induced epitope retrieval by 1mM EDTA in 10mM Tris buffer (pH8.5) at 120°C for 3min, [TA810569]) (1:500)



Immunohistochemical staining of paraffin-embedded Human endometrium tissue within the normal limits using anti-RNASE11 mouse monoclonal antibody. (Heat-induced epitope retrieval by 1mM EDTA in 10mM Tris buffer (pH8.5) at 120°C for 3min, [TA810569]) (1:500)