

## Product datasheet for **TA810565S**

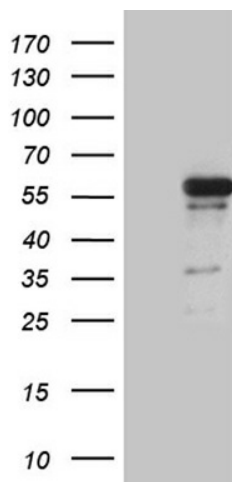
### **RUNX3 Mouse Monoclonal Antibody [Clone ID: OTI11D5]**

#### **Product data:**

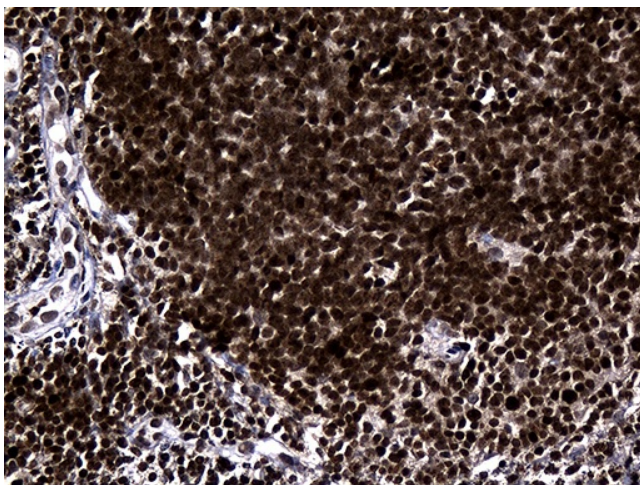
Product Type:	Primary Antibodies
Clone Name:	OTI11D5
Applications:	IHC, WB
Recommended Dilution:	WB 1:2000, IHC 1:500
Reactivity:	Human, Mouse, Rat
Host:	Mouse
Isotype:	IgG2a
Clonality:	Monoclonal
Immunogen:	Full length human recombinant protein of human RUNX3 (NP_001026850) produced in E.coli.
Formulation:	PBS (pH 7.3) containing 1% BSA, 50% glycerol and 0.02% sodium azide.
Concentration:	1 mg/ml
Purification:	Purified from mouse ascites fluids or tissue culture supernatant by affinity chromatography (protein A/G)
Conjugation:	Unconjugated
Storage:	Store at -20°C as received.
Stability:	Stable for 12 months from date of receipt.
Predicted Protein Size:	45.7 kDa
Gene Name:	runt related transcription factor 3
Database Link:	<a href="#">NP_001026850</a> <a href="#">Entrez Gene 12399 Mouse</a> <a href="#">Entrez Gene 156726 Rat</a> <a href="#">Entrez Gene 864 Human</a> <a href="#">Q13761</a>
Synonyms:	AML2; CBFA3; PEBP2aC
Protein Families:	Transcription Factors



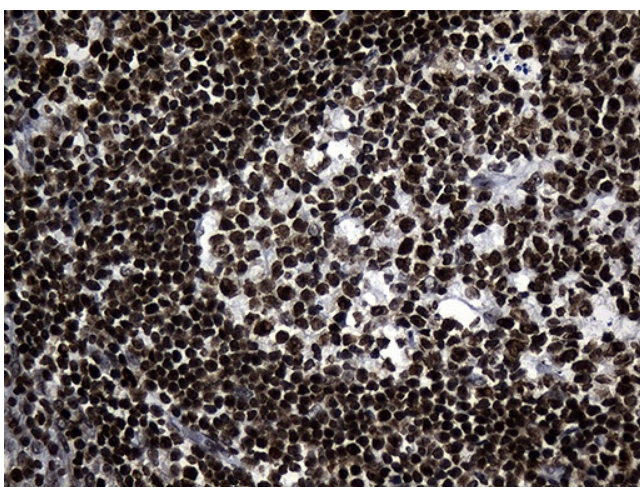
[View online »](#)

**Product images:**

HEK293T cells were transfected with the pCMV6-ENTRY control (Left lane) or pCMV6-ENTRY RUNX3 ([RC203597], Right lane) cDNA for 48 hrs and lysed. Equivalent amounts of cell lysates (5 ug per lane) were separated by SDS-PAGE and immunoblotted with anti-RUNX3 (1:2000). Positive lysates [LY400418] (100ug) and [LC400418] (20ug) can be purchased separately from OriGene.



Immunohistochemical staining of paraffin-embedded Human lymph node tissue within the normal limits using anti-RUNX3 mouse monoclonal antibody. (Heat-induced epitope retrieval by 1mM EDTA in 10mM Tris buffer (pH8.5) at 120°C for 3min, [TA810565]) (1:500)



Immunohistochemical staining of paraffin-embedded Human tonsil within the normal limits using anti-RUNX3 mouse monoclonal antibody. (Heat-induced epitope retrieval by 1mM EDTA in 10mM Tris buffer (pH8.5) at 120°C for 3min, [TA810565]) (1:500)