

## Product datasheet for **TA810560AM**

### **RPAIN Mouse Monoclonal Antibody (Biotin conjugated) [Clone ID: OTI6A7]**

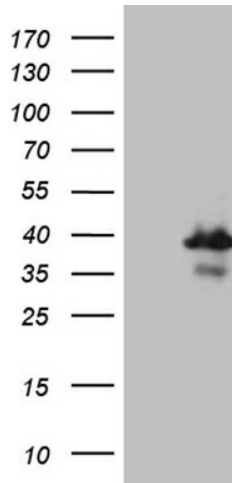
#### **Product data:**

Product Type:	Primary Antibodies
Clone Name:	OTI6A7
Applications:	IHC, WB
Recommended Dilution:	WB 1:500~2000, IHC 1:500
Reactivity:	Human
Host:	Mouse
Isotype:	IgG2b
Clonality:	Monoclonal
Immunogen:	Full length human recombinant protein of human RPAIN (NP_001028174) produced in HEK293T cell.
Formulation:	PBS (pH 7.3) containing 1% BSA, 50% glycerol and 0.02% sodium azide.
Concentration:	0.5 mg/ml
Purification:	Purified from mouse ascites fluids or tissue culture supernatant by affinity chromatography (protein A/G)
Conjugation:	Biotin
Storage:	Store at -20°C as received.
Stability:	Stable for 12 months from date of receipt.
Gene Name:	RPA interacting protein
Database Link:	<a href="#">NP_001153715</a> <a href="#">Entrez Gene 84268 Human</a> <a href="#">Q86UA6</a>
Synonyms:	HRIP; RIP

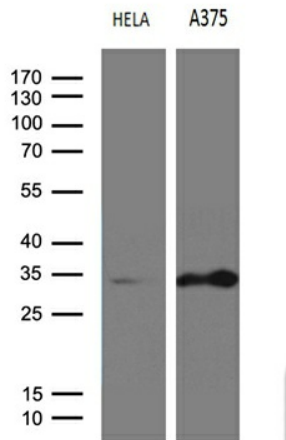


[View online »](#)

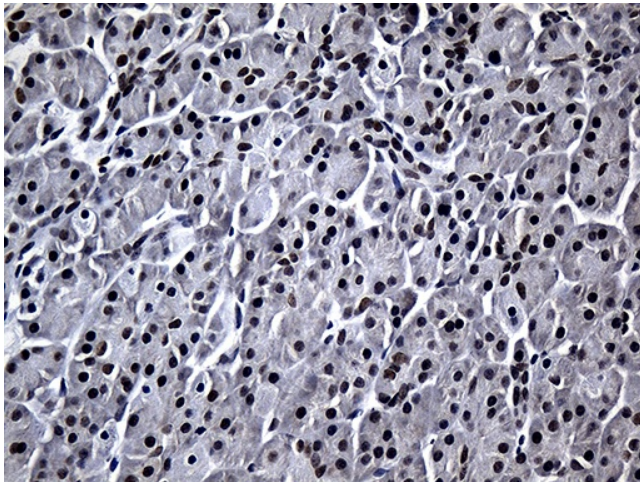
**Product images:**



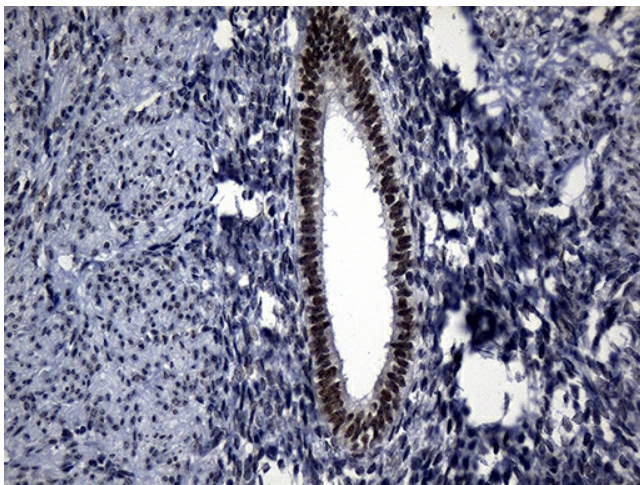
HEK293T cells were transfected with the pCMV6-ENTRY control (Cat# [PS100001], Left lane) or pCMV6-ENTRY RPAIN (Cat# [RC228164], Right lane) cDNA for 48 hrs and lysed. Equivalent amounts of cell lysates (5 ug per lane) were separated by SDS-PAGE and immunoblotted with anti-RPAIN (Cat# [TA810560])(1:2000).



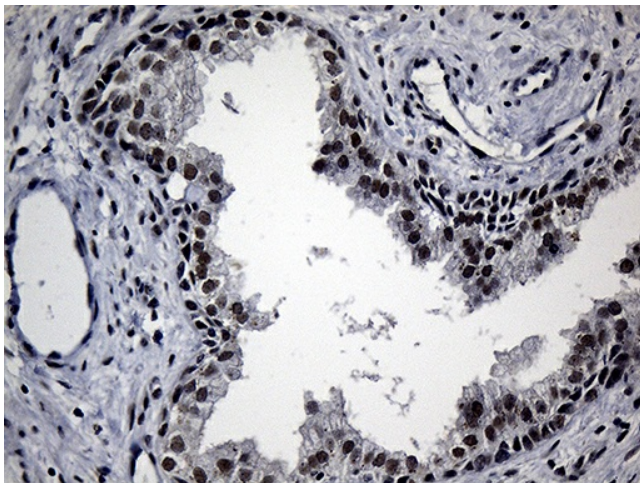
Western blot analysis of extracts (35ug) from 2 different cell lines by using anti-RPAIN monoclonal antibody (1:500).



Immunohistochemical staining of paraffin-embedded Human pancreas tissue within the normal limits using anti-RPAIN mouse monoclonal antibody. (Heat-induced epitope retrieval by 1mM EDTA in 10mM Tris buffer (pH8.5) at 120°C for 3min, [TA810560]) (1:500)



Immunohistochemical staining of paraffin-embedded Human endometrium tissue within the normal limits using anti-RPAIN mouse monoclonal antibody. (Heat-induced epitope retrieval by 1mM EDTA in 10mM Tris buffer (pH8.5) at 120°C for 3min, [TA810560]) (1:500)



Immunohistochemical staining of paraffin-embedded Human prostate tissue within the normal limits using anti-RPAIN mouse monoclonal antibody. (Heat-induced epitope retrieval by 1mM EDTA in 10mM Tris buffer (pH8.5) at 120°C for 3min, [TA810560]) (1:500)