

Product datasheet for **TA810555BM**

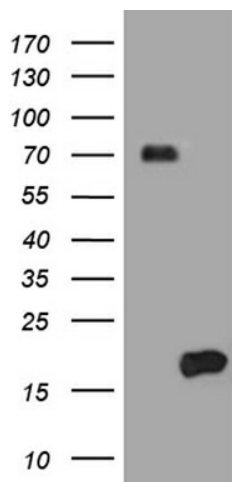
HES5 Mouse Monoclonal Antibody (HRP conjugated) [Clone ID: OTI6F7]

Product data:

Product Type:	Primary Antibodies
Clone Name:	OTI6F7
Applications:	WB
Recommended Dilution:	WB 1:500
Reactivity:	Human
Host:	Mouse
Isotype:	IgG1
Clonality:	Monoclonal
Immunogen:	Full length human recombinant protein of human HES5 (NP_001010926) produced in E.coli.
Formulation:	PBS (pH 7.3) containing 1% BSA, 50% glycerol.
Concentration:	0.5 mg/ml
Purification:	Purified from mouse ascites fluids or tissue culture supernatant by affinity chromatography (protein A/G)
Conjugation:	HRP
Storage:	Store at -20°C as received.
Stability:	Stable for 12 months from date of receipt.
Predicted Protein Size:	18 kDa
Gene Name:	hes family bHLH transcription factor 5
Database Link:	NP_001010926 Entrez Gene 388585 Human Q5TA89
Synonyms:	bHLHb38
Protein Families:	Druggable Genome, ES Cell Differentiation/IPS
Protein Pathways:	Notch signaling pathway



[View online »](#)

Product images:

HEK293T cells were transfected with the pCMV6-ENTRY control (Cat# [PS100001], Left lane) or pCMV6-ENTRY HES5 (Cat# [RC215311], Right lane) cDNA for 48 hrs and lysed. Equivalent amounts of cell lysates (5 ug per lane) were separated by SDS-PAGE and immunoblotted with anti-HES5 (Cat# [TA810555])(1:500). Positive lysates [LY423234] (100ug) and [LC423234] (20ug) can be purchased separately from OriGene.