

## Product datasheet for **TA810555**

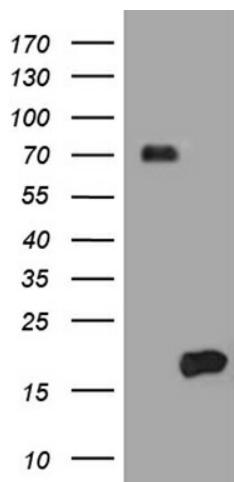
### HES5 Mouse Monoclonal Antibody [Clone ID: OTI6F7]

#### Product data:

|                         |   |
|-------------------------|---|
| Product Type:           | Primary Antibodies  |
| Clone Name:             | OTI6F7  |
| Applications:           | WB  |
| Recommended Dilution:   | WB 1:500  |
| Reactivity:             | Human   |
| Host:                   | Mouse   |
| Isotype:                | IgG1  |
| Clonality:              | Monoclonal  |
| Immunogen:              | Full length human recombinant protein of human HES5 (NP_001010926) produced in E.coli.                    |
| Formulation:            | PBS (pH 7.3) containing 1% BSA, 50% glycerol and 0.02% sodium azide.                                      |
| Concentration:          | 1 mg/ml   |
| Purification:           | Purified from mouse ascites fluids or tissue culture supernatant by affinity chromatography (protein A/G) |
| Conjugation:            | Unconjugated  |
| Storage:                | Store at -20°C as received.   |
| Stability:              | Stable for 12 months from date of receipt.  |
| Predicted Protein Size: | 18 kDa  |
| Gene Name:              | hes family bHLH transcription factor 5  |
| Database Link:          | <a href="#">NP_001010926</a><br><a href="#">Entrez Gene 388585 Human</a><br><a href="#">Q5TA89</a>        |
| Synonyms:               | bHLHb38   |
| Protein Families:       | Druggable Genome, ES Cell Differentiation/IPS   |
| Protein Pathways:       | Notch signaling pathway   |



[View online »](#)

**Product images:**

HEK293T cells were transfected with the pCMV6-ENTRY control (Cat# [PS100001], Left lane) or pCMV6-ENTRY HES5 (Cat# [RC215311], Right lane) cDNA for 48 hrs and lysed. Equivalent amounts of cell lysates (5 ug per lane) were separated by SDS-PAGE and immunoblotted with anti-HES5 (Cat# TA810555)(1:500). Positive lysates [LY423234] (100ug) and [LC423234] (20ug) can be purchased separately from OriGene.