

## Product datasheet for **TA810554AM**

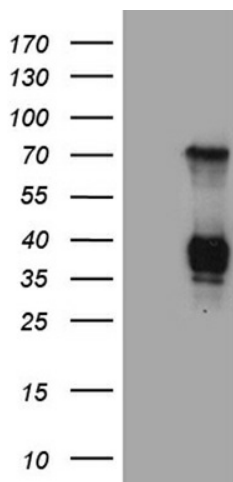
### **RNASE11 Mouse Monoclonal Antibody (Biotin conjugated) [Clone ID: OTI2H4]**

#### **Product data:**

Product Type:	Primary Antibodies
Clone Name:	OTI2H4
Applications:	WB
Recommended Dilution:	WB 1:2000
Reactivity:	Human
Host:	Mouse
Isotype:	IgG2b
Clonality:	Monoclonal
Immunogen:	Full length human recombinant protein of human RNASE11 (NP_660293) produced in E.coli.
Formulation:	PBS (pH 7.3) containing 1% BSA, 50% glycerol and 0.02% sodium azide.
Concentration:	0.5 mg/ml
Purification:	Purified from mouse ascites fluids or tissue culture supernatant by affinity chromatography (protein A/G)
Conjugation:	Biotin
Storage:	Store at -20°C as received.
Stability:	Stable for 12 months from date of receipt.
Predicted Protein Size:	22.2 kDa
Gene Name:	ribonuclease A family member 11 (inactive)
Database Link:	<a href="#">NP_660293</a> <a href="#">Entrez Gene 122651 Human</a> <a href="#">Q8TAA1</a>
Synonyms:	C14orf6; HEL-S-84p; RAJ1
Protein Families:	Secreted Protein



[View online »](#)

**Product images:**

HEK293T cells were transfected with the pCMV6-ENTRY control (Left lane) or pCMV6-ENTRY RNASE11 ([RC206219], Right lane) cDNA for 48 hrs and lysed. Equivalent amounts of cell lysates (5 ug per lane) were separated by SDS-PAGE and immunoblotted with anti-RNASE11 (1:2000). Positive lysates [LY407984] (100ug) and [LC407984] (20ug) can be purchased separately from OriGene.