

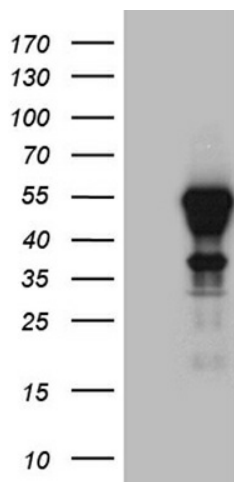
Product datasheet for **TA810539M**

GCM1 Mouse Monoclonal Antibody [Clone ID: OTI1F4]

Product data:

Product Type:	Primary Antibodies
Clone Name:	OTI1F4
Applications:	WB
Recommended Dilution:	WB 1:2000
Reactivity:	Human
Host:	Mouse
Isotype:	IgG2b
Clonality:	Monoclonal
Immunogen:	Full length human recombinant protein of human GCM1 (NP_003634) produced in E.coli.
Formulation:	PBS (pH 7.3) containing 1% BSA, 50% glycerol and 0.02% sodium azide.
Concentration:	1 mg/ml
Purification:	Purified from mouse ascites fluids or tissue culture supernatant by affinity chromatography (protein A/G)
Conjugation:	Unconjugated
Storage:	Store at -20°C as received.
Stability:	Stable for 12 months from date of receipt.
Predicted Protein Size:	49.1 kDa
Gene Name:	glial cells missing homolog 1
Database Link:	NP_003634 Entrez Gene 8521 Human Q9NP62
Synonyms:	GCMA; hGCMA
Protein Families:	Transcription Factors

[View online »](#)

Product images:

HEK293T cells were transfected with the pCMV6-ENTRY control (Left lane) or pCMV6-ENTRY GCM1 ([RC220319], Right lane) cDNA for 48 hrs and lysed. Equivalent amounts of cell lysates (5 ug per lane) were separated by SDS-PAGE and immunoblotted with anti-GCM1 (1:2000). Positive lysates [LY418526] (100ug) and [LC418526] (20ug) can be purchased separately from OriGene.