

## Product datasheet for TA810531M

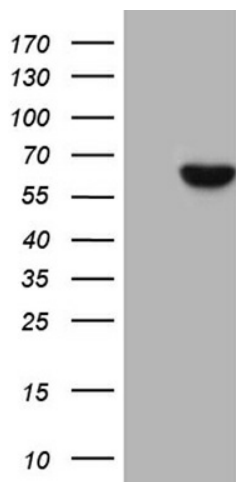
### UDP glucose dehydrogenase (UGDH) Mouse Monoclonal Antibody [Clone ID: OTI2C11]

#### Product data:

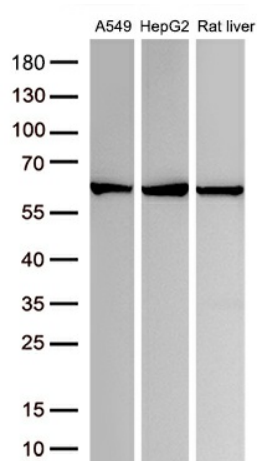
Product Type:	Primary Antibodies
Clone Name:	OTI2C11
Applications:	WB
Recommended Dilution:	WB 1:2000
Reactivity:	Human, Mouse, Rat
Host:	Mouse
Isotype:	IgG1
Clonality:	Monoclonal
Immunogen:	Full length human recombinant protein of human UGDH (NP_003350) produced in HEK293T cell.
Formulation:	PBS (pH 7.3) containing 1% BSA, 50% glycerol and 0.02% sodium azide.
Concentration:	1 mg/ml
Purification:	Purified from mouse ascites fluids or tissue culture supernatant by affinity chromatography (protein A/G)
Conjugation:	Unconjugated
Storage:	Store at -20°C as received.
Stability:	Stable for 12 months from date of receipt.
Predicted Protein Size:	54.8 kDa
Gene Name:	UDP-glucose 6-dehydrogenase
Database Link:	<a href="#">NP_003350</a> <a href="#">Entrez Gene 22235 Mouse</a> <a href="#">Entrez Gene 83472 Rat</a> <a href="#">Entrez Gene 7358 Human</a> <a href="#">O60701</a>
Synonyms:	GDH; UDP-GlcDH; UDPGDH; UGD
Protein Pathways:	Amino sugar and nucleotide sugar metabolism, Ascorbate and aldarate metabolism, Metabolic pathways, Pentose and glucuronate interconversions, Starch and sucrose metabolism


[View online »](#)

## Product images:



HEK293T cells were transfected with the pCMV6-ENTRY control (Cat# [PS100001], Left lane) or pCMV6-ENTRY UGDH (Cat# [RC202132], Right lane) cDNA for 48 hrs and lysed. Equivalent amounts of cell lysates (5 ug per lane) were separated by SDS-PAGE and immunoblotted with anti-UGDH (Cat# [TA810531])(1:2000). Positive lysates [LY401149] (100ug) and [LC401149] (20ug) can be purchased separately from OriGene.



Western blot analysis of extracts (50ug per lane) from 2 different cell lines and 1 tissue lysates by using anti-UGDH antibody ([TA810531],1:3000; 1mg/ml).