

Product datasheet for **TA810531**

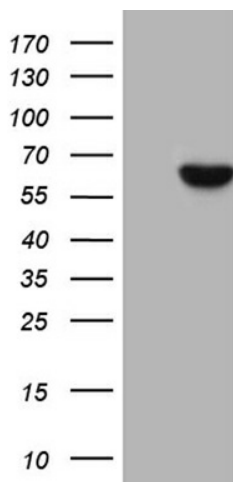
UDP glucose dehydrogenase (UGDH) Mouse Monoclonal Antibody [Clone ID: OTI2C11]

Product data:

| | |
|-------------------------|---|
| Product Type: | Primary Antibodies |
| Clone Name: | OTI2C11 |
| Applications: | WB |
| Recommended Dilution: | WB 1:2000 |
| Reactivity: | Human, Mouse, Rat |
| Host: | Mouse |
| Isotype: | IgG1 |
| Clonality: | Monoclonal |
| Immunogen: | Full length human recombinant protein of human UGDH (NP_003350) produced in HEK293T cell. |
| Formulation: | PBS (pH 7.3) containing 1% BSA, 50% glycerol and 0.02% sodium azide. |
| Concentration: | 1 mg/ml |
| Purification: | Purified from mouse ascites fluids or tissue culture supernatant by affinity chromatography (protein A/G) |
| Conjugation: | Unconjugated |
| Storage: | Store at -20°C as received. |
| Stability: | Stable for 12 months from date of receipt. |
| Predicted Protein Size: | 54.8 kDa |
| Gene Name: | UDP-glucose 6-dehydrogenase |
| Database Link: | NP_003350 Entrez Gene 22235 Mouse Entrez Gene 83472 Rat Entrez Gene 7358 Human O60701 |
| Synonyms: | GDH; UDP-GlcDH; UDPGDH; UGD |
| Protein Pathways: | Amino sugar and nucleotide sugar metabolism, Ascorbate and aldarate metabolism, Metabolic pathways, Pentose and glucuronate interconversions, Starch and sucrose metabolism |



[View online »](#)

Product images:

HEK293T cells were transfected with the pCMV6-ENTRY control (Cat# [PS100001], Left lane) or pCMV6-ENTRY UGDH (Cat# [RC202132], Right lane) cDNA for 48 hrs and lysed. Equivalent amounts of cell lysates (5 ug per lane) were separated by SDS-PAGE and immunoblotted with anti-UGDH (Cat# TA810531)(1:2000). Positive lysates [LY401149] (100ug) and [LC401149] (20ug) can be purchased separately from OriGene.