

Product datasheet for **TA810522AM**

KIAA1970 (EARS2) Mouse Monoclonal Antibody (Biotin conjugated) [Clone ID: OTI2C1]

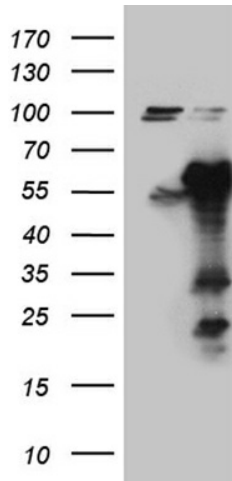
Product data:

Product Type:	Primary Antibodies
Clone Name:	OTI2C1
Applications:	IHC, WB
Recommended Dilution:	WB 1:500~2000, IHC 1:500
Reactivity:	Human, Mouse, Rat
Host:	Mouse
Isotype:	IgG1
Clonality:	Monoclonal
Immunogen:	Full length human recombinant protein of human EARS2 (NP_001077083) produced in E.coli.
Formulation:	PBS (pH 7.3) containing 1% BSA, 50% glycerol and 0.02% sodium azide.
Concentration:	0.5 mg/ml
Purification:	Purified from mouse ascites fluids or tissue culture supernatant by affinity chromatography (protein A/G)
Conjugation:	Biotin
Storage:	Store at -20°C as received.
Stability:	Stable for 12 months from date of receipt.
Predicted Protein Size:	58.5 kDa
Gene Name:	glutamyl-tRNA synthetase 2, mitochondrial
Database Link:	NP_001077083 Entrez Gene 67417 Mouse Entrez Gene 361641 Rat Entrez Gene 124454 Human Q5JPH6
Synonyms:	COXPD12; gluRS; MSE1
Protein Families:	Druggable Genome
Protein Pathways:	Aminoacyl-tRNA biosynthesis, Metabolic pathways, Porphyrin and chlorophyll metabolism

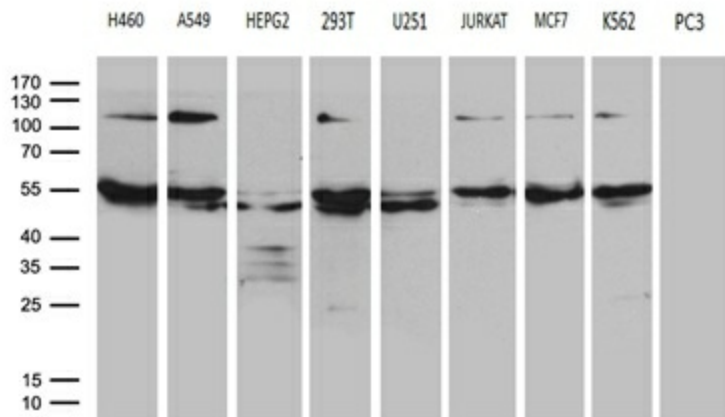


[View online »](#)

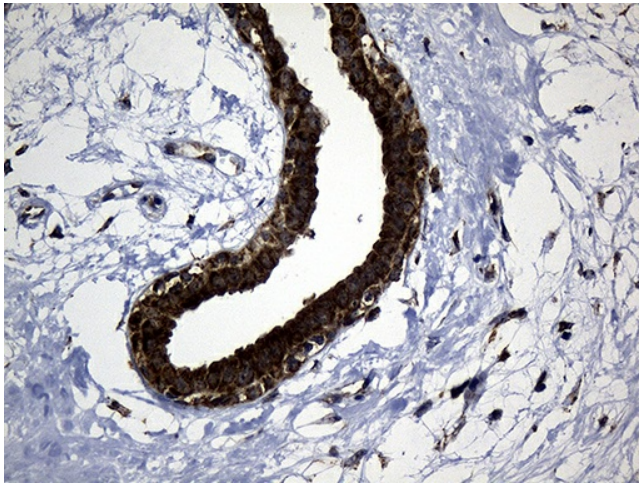
Product images:



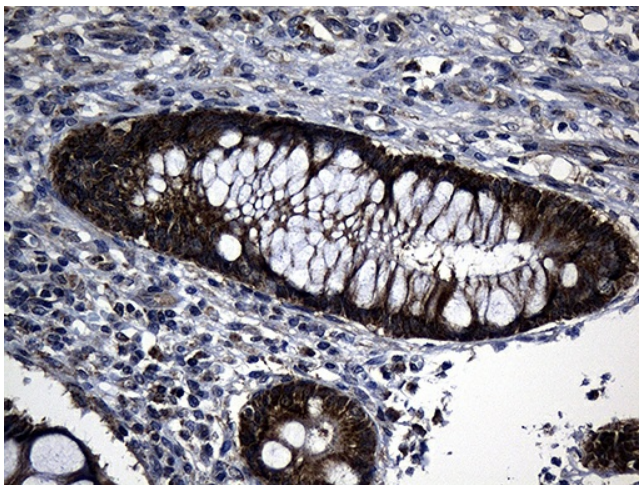
HEK293T cells were transfected with the pCMV6-ENTRY control (Cat# [PS100001], Left lane) or pCMV6-ENTRY EARS2 (Cat# [RC221871], Right lane) cDNA for 48 hrs and lysed. Equivalent amounts of cell lysates (5 ug per lane) were separated by SDS-PAGE and immunoblotted with anti-EARS2 (Cat# [TA810522])(1:2000). Positive lysates [LY421237] (100ug) and [LC421237] (20ug) can be purchased separately from OriGene.



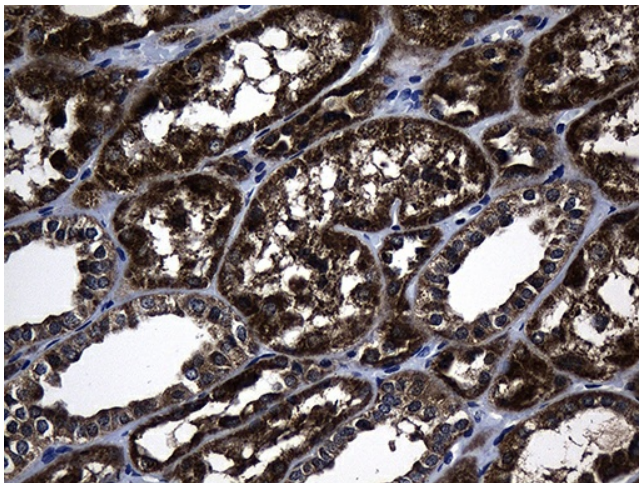
Western blot analysis of extracts (35ug) from 9 different cell lines by using anti-EARS2 monoclonal antibody (1:500).



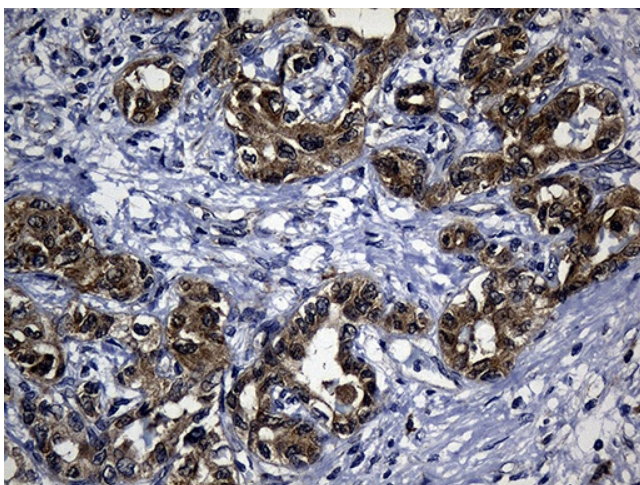
Immunohistochemical staining of paraffin-embedded Human breast tissue within the normal limits using anti-EARS2 mouse monoclonal antibody. (Heat-induced epitope retrieval by 1mM EDTA in 10mM Tris buffer (pH8.5) at 120°C for 3min, [TA810522]) (1:500)



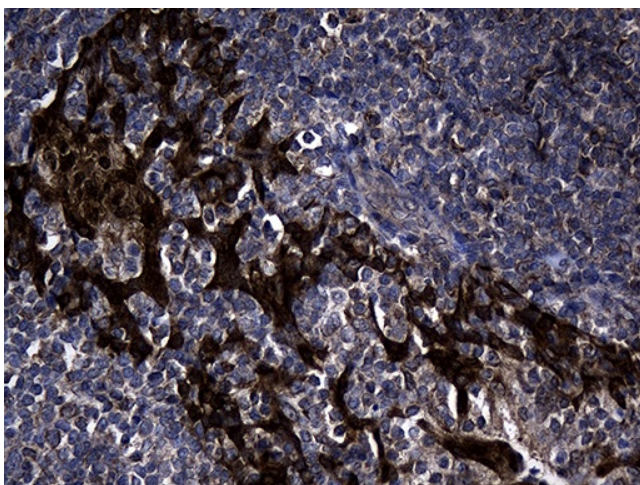
Immunohistochemical staining of paraffin-embedded Human colon tissue within the normal limits using anti-EARS2 mouse monoclonal antibody. (Heat-induced epitope retrieval by 1mM EDTA in 10mM Tris buffer (pH8.5) at 120°C for 3min, [TA810522]) (1:500)



Immunohistochemical staining of paraffin-embedded Human Kidney tissue within the normal limits using anti-EARS2 mouse monoclonal antibody. (Heat-induced epitope retrieval by 1mM EDTA in 10mM Tris buffer (pH8.5) at 120°C for 3min, [TA810522]) (1:500)



Immunohistochemical staining of paraffin-embedded Carcinoma of Human liver tissue using anti-EARS2 mouse monoclonal antibody. (Heat-induced epitope retrieval by 1mM EDTA in 10mM Tris buffer (pH8.5) at 120°C for 3min, [TA810522]) (1:500)



Immunohistochemical staining of paraffin-embedded Human tonsil within the normal limits using anti-EARS2 mouse monoclonal antibody. (Heat-induced epitope retrieval by 1mM EDTA in 10mM Tris buffer (pH8.5) at 120°C for 3min, [TA810522]) (1:500)