

## Product datasheet for **TA810517BM**

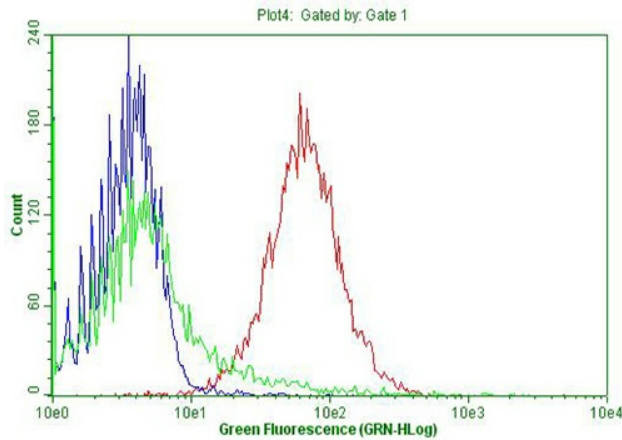
### CD38 Mouse Monoclonal Antibody (HRP conjugated) [Clone ID: OTI6B3]

#### Product data:

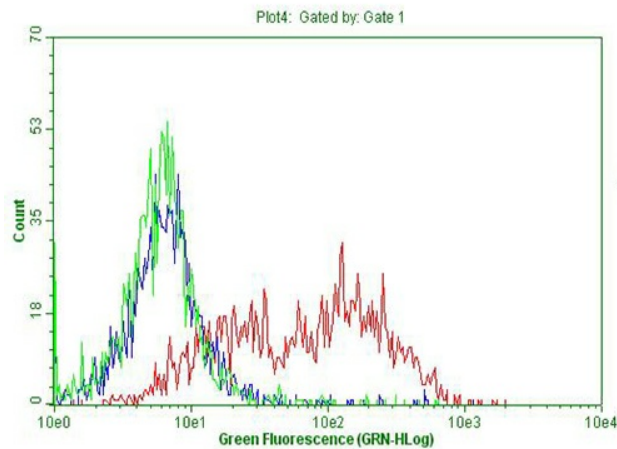
Product Type:	Primary Antibodies
Clone Name:	OTI6B3
Applications:	FC
Recommended Dilution:	FLOW 1:50
Reactivity:	Rabbit
Host:	Mouse
Isotype:	IgG2a
Clonality:	Monoclonal
Immunogen:	Recombinant rabbit CD38 protein (NP_001076152.1) produced in HEK293 cells.
Formulation:	PBS (pH 7.3) containing 1% BSA, 50% glycerol.
Concentration:	0.5 mg/ml
Purification:	Purified from mouse ascites fluids or tissue culture supernatant by affinity chromatography (protein A/G)
Conjugation:	HRP
Storage:	Store at -20°C as received.
Stability:	Stable for 12 months from date of receipt.
Database Link:	<a href="#">NP_001076152</a> <a href="#">Entrez Gene 100009409 Rabbit</a>
Synonyms:	ADPRC 1



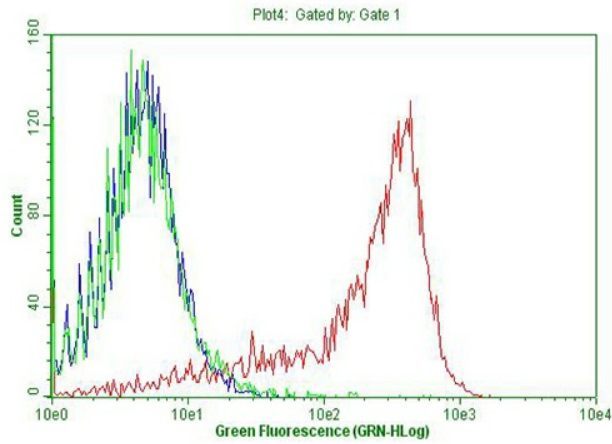
[View online »](#)

**Product images:**

Flow cytometric Analysis of living RBC-lysed rabbit peripheral blood cells, using anti-rabbit CD38 antibody ([TA810517]), (Red), compared to a nonspecific negative control antibody ([TA180144]), (green) and PBS, (blue) (1:50).



Flow cytometric Analysis of living rabbit bone marrow cells, using anti-rabbit CD38 antibody ([TA810517]), (Red), compared to a nonspecific negative control antibody ([TA180144]), (green) and PBS, (blue) (1:50).



Flow cytometric Analysis of living rabbit spleen cells, using anti-rabbit CD38 antibody ([TA810517]), (Red), compared to a nonspecific negative control antibody ([TA180144]), (green) and PBS, (blue) (1:50).