

Product datasheet for **TA810506**

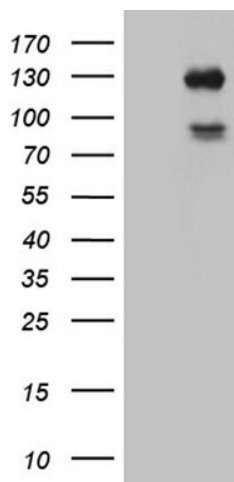
PLK4 Mouse Monoclonal Antibody [Clone ID: OTI4B6]

Product data:

Product Type:	Primary Antibodies
Clone Name:	OTI4B6
Applications:	WB
Recommended Dilution:	WB 1:2000
Reactivity:	Human
Host:	Mouse
Isotype:	IgG1
Clonality:	Monoclonal
Immunogen:	Human recombinant protein fragment corresponding to amino acids 307-612 of human PLK4 (NP_055079) produced in E.coli.
Formulation:	PBS (pH 7.3) containing 1% BSA, 50% glycerol and 0.02% sodium azide.
Concentration:	1 mg/ml
Purification:	Purified from mouse ascites fluids or tissue culture supernatant by affinity chromatography (protein A/G)
Conjugation:	Unconjugated
Storage:	Store at -20°C as received.
Stability:	Stable for 12 months from date of receipt.
Predicted Protein Size:	108.8 kDa
Gene Name:	polo like kinase 4
Database Link:	NP_055079 Entrez Gene 10733 Human O00444
Synonyms:	MCCRP2; SAK; STK18
Protein Families:	Druggable Genome, Protein Kinase



[View online »](#)

Product images:

HEK293T cells were transfected with the pCMV6-ENTRY control (Left lane) or pCMV6-ENTRY PLK4 ([RC206015], Right lane) cDNA for 48 hrs and lysed. Equivalent amounts of cell lysates (5 ug per lane) were separated by SDS-PAGE and immunoblotted with anti-PLK4 (1:2000). Positive lysates [LY402302] (100ug) and [LC402302] (20ug) can be purchased separately from OriGene.