

Product datasheet for **TA810498AM**

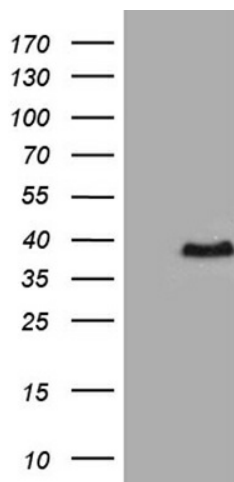
RPAIN Mouse Monoclonal Antibody (Biotin conjugated) [Clone ID: OTI3E6]

Product data:

Product Type:	Primary Antibodies
Clone Name:	OTI3E6
Applications:	WB
Recommended Dilution:	WB 1:500
Reactivity:	Human
Host:	Mouse
Isotype:	IgG1
Clonality:	Monoclonal
Immunogen:	Full length human recombinant protein of human RPAIN (NP_001028174) produced in HEK293T cell.
Formulation:	PBS (pH 7.3) containing 1% BSA, 50% glycerol and 0.02% sodium azide.
Concentration:	0.5 mg/ml
Purification:	Purified from mouse ascites fluids or tissue culture supernatant by affinity chromatography (protein A/G)
Conjugation:	Biotin
Storage:	Store at -20°C as received.
Stability:	Stable for 12 months from date of receipt.
Gene Name:	RPA interacting protein
Database Link:	NP_001153715 Entrez Gene 84268 Human Q86UA6
Synonyms:	HRIP; RIP



[View online »](#)

Product images:

HEK293T cells were transfected with the pCMV6-ENTRY control (Left lane) or pCMV6-ENTRY RPAIN ([RC228164], Right lane) cDNA for 48 hrs and lysed. Equivalent amounts of cell lysates (5 ug per lane) were separated by SDS-PAGE and immunoblotted with anti-RPAIN (1:500).