

Product datasheet for **TA810497AM**

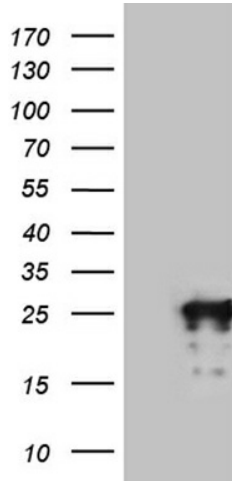
MED19 Mouse Monoclonal Antibody (Biotin conjugated) [Clone ID: OTI2E11]

Product data:

Product Type:	Primary Antibodies
Clone Name:	OTI2E11
Applications:	WB
Recommended Dilution:	WB 1:2000
Reactivity:	Human, Mouse, Rat
Host:	Mouse
Isotype:	IgG1
Clonality:	Monoclonal
Immunogen:	Full length human recombinant protein of human MED19 (NP_703151) produced in E.coli.
Formulation:	PBS (pH 7.3) containing 1% BSA, 50% glycerol and 0.02% sodium azide.
Concentration:	0.5 mg/ml
Purification:	Purified from mouse ascites fluids or tissue culture supernatant by affinity chromatography (protein A/G)
Conjugation:	Biotin
Storage:	Store at -20°C as received.
Stability:	Stable for 12 months from date of receipt.
Predicted Protein Size:	20.3 kDa
Gene Name:	mediator complex subunit 19
Database Link:	NP_703151 Entrez Gene 311165 Rat Entrez Gene 381379 Mouse Entrez Gene 219541 Human A0JLT2
Synonyms:	DT2P1G7; LCMR1; MED19AS
Protein Families:	Druggable Genome



[View online »](#)

Product images:

HEK293T cells were transfected with the pCMV6-ENTRY control (Left lane) or pCMV6-ENTRY MED19 [RC206806], Right lane) cDNA for 48 hrs and lysed. Equivalent amounts of cell lysates (5 ug per lane) were separated by SDS-PAGE and immunoblotted with anti-MED19 (1:2000). Positive lysates [LY407036] (100ug) and [LC407036] (20ug) can be purchased separately from OriGene.