

## Product datasheet for **TA810475AM**

### **MED19 Mouse Monoclonal Antibody (Biotin conjugated) [Clone ID: OTI4C3]**

#### **Product data:**

Product Type:	Primary Antibodies
Clone Name:	OTI4C3
Applications:	WB
Recommended Dilution:	WB 1:2000
Reactivity:	Human, Mouse, Rat
Host:	Mouse
Isotype:	IgG1
Clonality:	Monoclonal
Immunogen:	Full length human recombinant protein of human MED19 (NP_703151) produced in E.coli.
Formulation:	PBS (pH 7.3) containing 1% BSA, 50% glycerol and 0.02% sodium azide.
Concentration:	0.5 mg/ml
Purification:	Purified from mouse ascites fluids or tissue culture supernatant by affinity chromatography (protein A/G)
Conjugation:	Biotin
Storage:	Store at -20°C as received.
Stability:	Stable for 12 months from date of receipt.
Predicted Protein Size:	20.3 kDa
Gene Name:	mediator complex subunit 19
Database Link:	<a href="#">NP_703151</a> <a href="#">Entrez Gene 311165 Rat</a> <a href="#">Entrez Gene 381379 Mouse</a> <a href="#">Entrez Gene 219541 Human</a> <a href="#">A0JLT2</a>
Background:	MED19 is a component of the Mediator complex, which is a coactivator for DNA-binding factors that activate transcription via RNA polymerase II (Sato et al., 2003 [PubMed 12584197]). [supplied by OMIM, Oct 2008]. Publication Note: This RefSeq record includes a subset of the publications that are available for this gene. Please see the Gene record to access additional publications. ##Evidence-Data-START## Transcript exon combination :: BC037223.1, EL733643.1 [ECO:0000332] RNAseq introns :: single sample supports all introns ERS025082, ERS025095 [ECO:0000348] ##Evidence-Data-END##

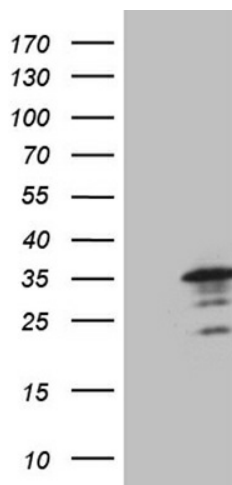


[View online »](#)

Synonyms: DT2P1G7; LCMR1; MED19AS

Protein Families: Druggable Genome

### Product images:



HEK293T cells were transfected with the pCMV6-ENTRY control (Left lane) or pCMV6-ENTRY MED19 ([RC206806], Right lane) cDNA for 48 hrs and lysed. Equivalent amounts of cell lysates (5 ug per lane) were separated by SDS-PAGE and immunoblotted with anti-MED19 (1:2000). Positive lysates [LY407036] (100ug) and [LC407036] (20ug) can be purchased separately from OriGene.