

Product datasheet for **TA810469S**

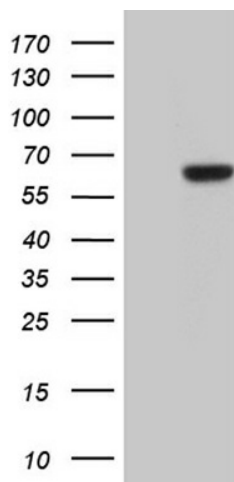
CDY2B Mouse Monoclonal Antibody [Clone ID: OTI1A10]

Product data:

Product Type:	Primary Antibodies
Clone Name:	OTI1A10
Applications:	WB
Recommended Dilution:	WB 1:2000
Reactivity:	Human
Host:	Mouse
Isotype:	IgG1
Clonality:	Monoclonal
Immunogen:	Full length human recombinant protein of human CDY2B (NP_001001722) produced in E.coli.
Formulation:	PBS (pH 7.3) containing 1% BSA, 50% glycerol and 0.02% sodium azide.
Concentration:	1 mg/ml
Purification:	Purified from mouse ascites fluids or tissue culture supernatant by affinity chromatography (protein A/G)
Conjugation:	Unconjugated
Storage:	Store at -20°C as received.
Stability:	Stable for 12 months from date of receipt.
Predicted Protein Size:	60.3 kDa
Gene Name:	chromodomain protein, Y-linked, 2B
Database Link:	NP_001001722 Entrez Gene 203611 Human Q9Y6F7
Synonyms:	CDY



[View online »](#)

Product images:

HEK293T cells were transfected with the pCMV6-ENTRY control (Left lane) or pCMV6-ENTRY CDY2B ([RC214700], Right lane) cDNA for 48 hrs and lysed. Equivalent amounts of cell lysates (5 ug per lane) were separated by SDS-PAGE and immunoblotted with anti-CDY2B (1:2000). Positive lysates [LY424221] (100ug) and [LC424221] (20ug) can be purchased separately from OriGene.