

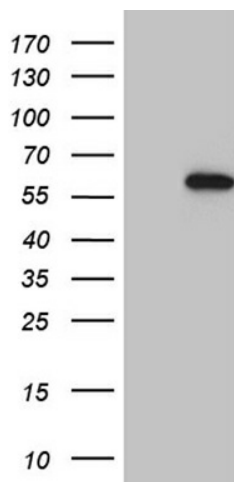
Product datasheet for **TA810468M**

KIAA1970 (EARS2) Mouse Monoclonal Antibody [Clone ID: OTI2B1]

Product data:

Product Type:	Primary Antibodies
Clone Name:	OTI2B1
Applications:	WB
Recommended Dilution:	WB 1:2000
Reactivity:	Human, Mouse, Rat
Host:	Mouse
Isotype:	IgG1
Clonality:	Monoclonal
Immunogen:	Full length human recombinant protein of human EARS2 (NP_001077083) produced in E.coli.
Formulation:	PBS (pH 7.3) containing 1% BSA, 50% glycerol and 0.02% sodium azide.
Concentration:	1 mg/ml
Purification:	Purified from mouse ascites fluids or tissue culture supernatant by affinity chromatography (protein A/G)
Conjugation:	Unconjugated
Storage:	Store at -20°C as received.
Stability:	Stable for 12 months from date of receipt.
Predicted Protein Size:	58.5 kDa
Gene Name:	glutamyl-tRNA synthetase 2, mitochondrial
Database Link:	NP_001077083 Entrez Gene 67417 Mouse Entrez Gene 361641 Rat Entrez Gene 124454 Human Q5JPH6
Synonyms:	COXPD12; gluRS; MSE1
Protein Families:	Druggable Genome
Protein Pathways:	Aminoacyl-tRNA biosynthesis, Metabolic pathways, Porphyrin and chlorophyll metabolism


[View online »](#)

Product images:


HEK293T cells were transfected with the pCMV6-ENTRY control (Left lane) or pCMV6-ENTRY EARS2 ([RC221871], Right lane) cDNA for 48 hrs and lysed. Equivalent amounts of cell lysates (5 ug per lane) were separated by SDS-PAGE and immunoblotted with anti-EARS2 (1:2000). Positive lysates [LY421237] (100ug) and [LC421237] (20ug) can be purchased separately from OriGene.