

Product datasheet for **TA810467AM**

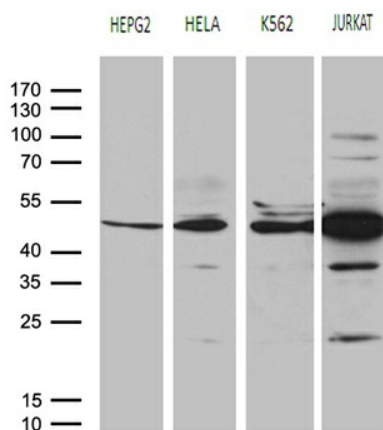
RRM2 Mouse Monoclonal Antibody (Biotin conjugated) [Clone ID: OTI3D3]

Product data:

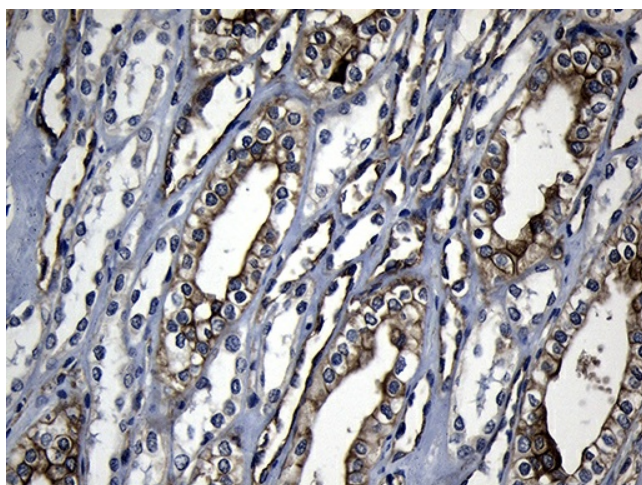
Product Type:	Primary Antibodies
Clone Name:	OTI3D3
Applications:	IHC, WB
Recommended Dilution:	WB 1:500, IHC 1:150
Reactivity:	Human, Mouse, Rat
Host:	Mouse
Isotype:	IgG1
Clonality:	Monoclonal
Immunogen:	Full length human recombinant protein of human RRM2 (NP_001025) produced in HEK293T.
Formulation:	PBS (pH 7.3) containing 1% BSA, 50% glycerol and 0.02% sodium azide.
Concentration:	0.5 mg/ml
Purification:	Purified from mouse ascites fluids or tissue culture supernatant by affinity chromatography (protein A/G)
Conjugation:	Biotin
Storage:	Store at -20°C as received.
Stability:	Stable for 12 months from date of receipt.
Predicted Protein Size:	44.7 kDa
Gene Name:	ribonucleotide reductase regulatory subunit M2
Database Link:	NP_001025 Entrez Gene 20135 Mouse Entrez Gene 362720 Rat Entrez Gene 6241 Human P31350
Synonyms:	R2; RR2; RR2M
Protein Families:	Druggable Genome
Protein Pathways:	Glutathione metabolism, Metabolic pathways, p53 signaling pathway, Purine metabolism, Pyrimidine metabolism



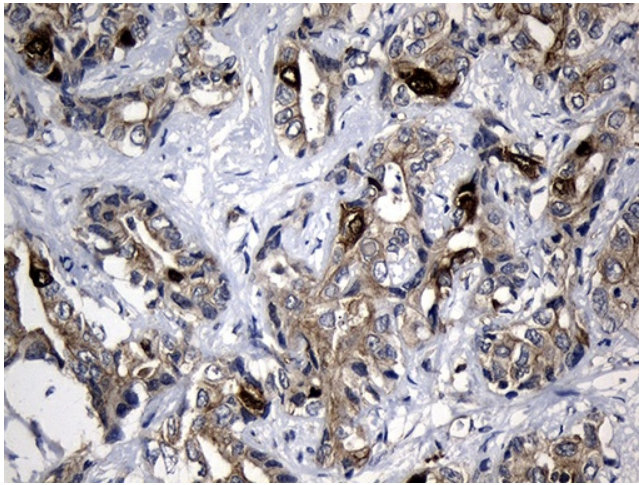
[View online »](#)

Product images:

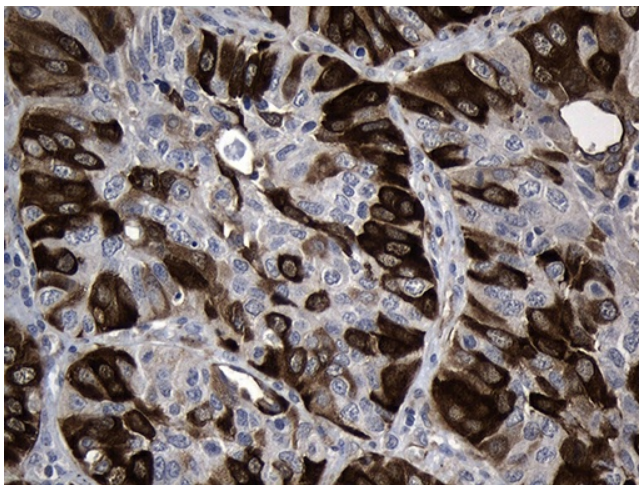
Western blot analysis of extracts (35ug) from 4 different cell lines by using anti-RRM2 monoclonal antibody (1:500).



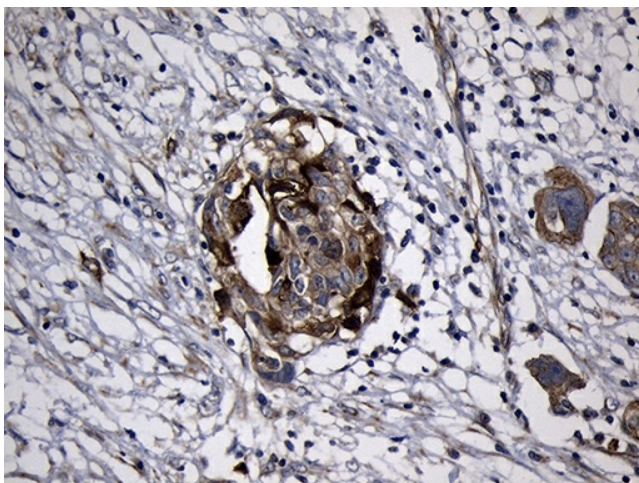
Immunohistochemical staining of paraffin-embedded Human Kidney tissue within the normal limits using anti-RRM2 mouse monoclonal antibody. (Heat-induced epitope retrieval by 1mM EDTA in 10mM Tris buffer (pH8.5) at 120°C for 3min, [TA810467]) (1:150)



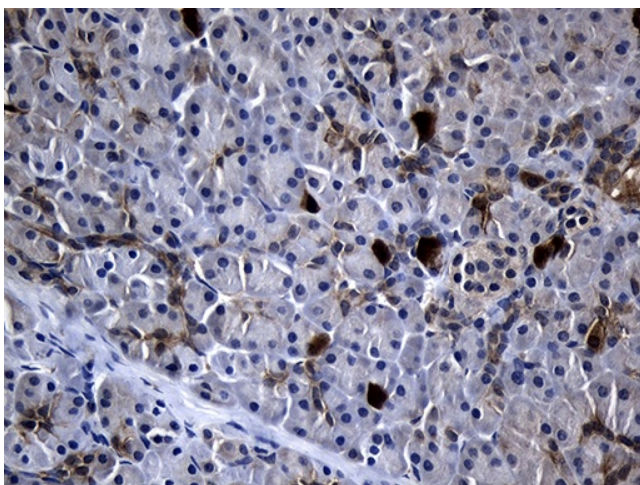
Immunohistochemical staining of paraffin-embedded Carcinoma of Human liver tissue using anti-RRM2 mouse monoclonal antibody. (Heat-induced epitope retrieval by 1mM EDTA in 10mM Tris buffer (pH8.5) at 120°C for 3min, [TA810467]) (1:150)



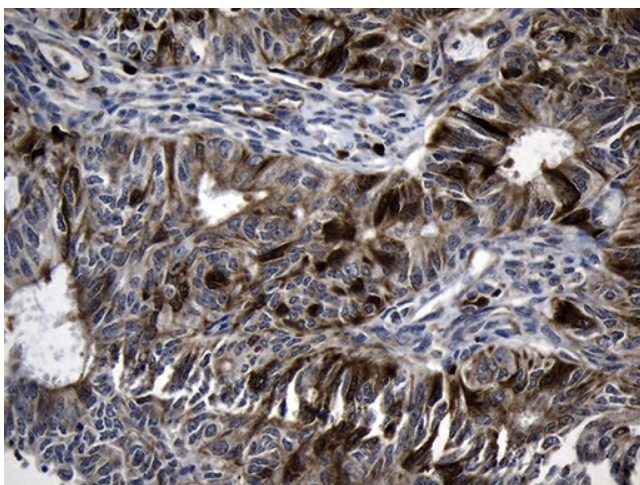
Immunohistochemical staining of paraffin-embedded Carcinoma of Human lung tissue using anti-RRM2 mouse monoclonal antibody. (Heat-induced epitope retrieval by 1mM EDTA in 10mM Tris buffer (pH8.5) at 120°C for 3min, [TA810467]) (1:150)



Immunohistochemical staining of paraffin-embedded Adenocarcinoma of Human ovary tissue using anti-RRM2 mouse monoclonal antibody. (Heat-induced epitope retrieval by 1mM EDTA in 10mM Tris buffer (pH8.5) at 120°C for 3min, [TA810467]) (1:150)



Immunohistochemical staining of paraffin-embedded Human pancreas tissue within the normal limits using anti-RRM2 mouse monoclonal antibody. (Heat-induced epitope retrieval by 1mM EDTA in 10mM Tris buffer (pH8.5) at 120°C for 3min, [TA810467]) (1:150)



Immunohistochemical staining of paraffin-embedded Adenocarcinoma of Human endometrium tissue using anti-RRM2 mouse monoclonal antibody. (Heat-induced epitope retrieval by 1mM EDTA in 10mM Tris buffer (pH8.5) at 120°C for 3min, [TA810467]) (1:150)