

## Product datasheet for **TA810466S**

### C1D Mouse Monoclonal Antibody [Clone ID: OTI5B3]

#### Product data:

Product Type:	Primary Antibodies
Clone Name:	OTI5B3
Applications:	WB
Recommended Dilution:	WB 1:2000
Reactivity:	Human, Mouse
Host:	Mouse
Isotype:	IgG1
Clonality:	Monoclonal
Immunogen:	Full length human recombinant protein of human C1D (NP_775269) produced in E.coli.
Formulation:	PBS (pH 7.3) containing 1% BSA, 50% glycerol and 0.02% sodium azide.
Concentration:	1 mg/ml
Purification:	Purified from mouse ascites fluids or tissue culture supernatant by affinity chromatography (protein A/G)
Conjugation:	Unconjugated
Storage:	Store at -20°C as received.
Stability:	Stable for 12 months from date of receipt.
Predicted Protein Size:	15.8 kDa
Gene Name:	C1D nuclear receptor corepressor
Database Link:	<a href="#">NP_775269</a> <a href="#">Entrez Gene 57316 Mouse</a> <a href="#">Entrez Gene 10438 Human</a> <a href="#">Q13901</a>
Background:	The protein encoded by this gene is a DNA binding and apoptosis-inducing protein and is localized in the nucleus. It is also a Rac3-interacting protein which acts as a corepressor for the thyroid hormone receptor. This protein is thought to regulate TRAX/Translin complex formation. Alternate splicing results in multiple transcript variants that encode the same protein. Multiple pseudogenes of this gene are found on chromosome 10. [provided by RefSeq, Jun 2010]



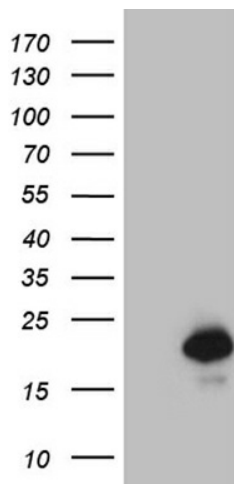
[View online »](#)

**Synonyms:** hC1D; LRP1; Rrp47; SUN-CoR; SUNCOR

**Protein Families:** Druggable Genome

**Protein Pathways:** RNA degradation

**Product images:**



HEK293T cells were transfected with the pCMV6-ENTRY control (Left lane) or pCMV6-ENTRY C1D ([RC203301], Right lane) cDNA for 48 hrs and lysed. Equivalent amounts of cell lysates (5 ug per lane) were separated by SDS-PAGE and immunoblotted with anti-C1D (1:2000). Positive lysates [LY406634] (100ug) and [LC406634] (20ug) can be purchased separately from OriGene.