

Product datasheet for **TA810461AM**

PLAC2 (TINCR) Mouse Monoclonal Antibody (Biotin conjugated) [Clone ID: OTI6C11]

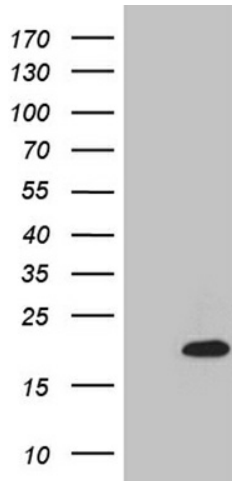
Product data:

Product Type:	Primary Antibodies
Clone Name:	OTI6C11
Applications:	WB
Recommended Dilution:	WB 1:2000
Reactivity:	Human
Host:	Mouse
Isotype:	IgG1
Clonality:	Monoclonal
Immunogen:	Full length human recombinant protein of human PLAC2 (NP_699206) produced in E.coli.
Formulation:	PBS (pH 7.3) containing 1% BSA, 50% glycerol and 0.02% sodium azide.
Concentration:	0.5 mg/ml
Purification:	Purified from mouse ascites fluids or tissue culture supernatant by affinity chromatography (protein A/G)
Conjugation:	Biotin
Storage:	Store at -20°C as received.
Stability:	Stable for 12 months from date of receipt.
Predicted Protein Size:	16.5 kDa
Gene Name:	tissue differentiation-inducing non-protein coding RNA
Database Link:	NP_699206 Entrez Gene 257000 Human
Synonyms:	FLJ90734



[View online »](#)

Product images:



HEK293T cells were transfected with the pCMV6-ENTRY control (Cat# [PS100001], Left lane) or pCMV6-ENTRY PLAC2 (Cat# [RC207313], Right lane) cDNA for 48 hrs and lysed. Equivalent amounts of cell lysates (5 ug per lane) were separated by SDS-PAGE and immunoblotted with anti-PLAC2 (Cat# [TA810461])(1:2000). Positive lysates [LY407086] (100ug) and [LC407086] (20ug) can be purchased separately from OriGene.