

## Product datasheet for **TA810460BM**

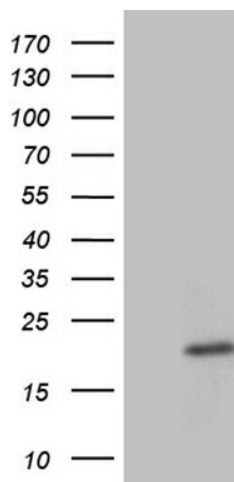
### PLAC2 (TINCR) Mouse Monoclonal Antibody (HRP conjugated) [Clone ID: OTI6G4]

#### Product data:

Product Type:	Primary Antibodies
Clone Name:	OTI6G4
Applications:	WB
Recommended Dilution:	WB 1:500
Reactivity:	Human
Host:	Mouse
Isotype:	IgG1
Clonality:	Monoclonal
Immunogen:	Full length human recombinant protein of human PLAC2 (NP_699206) produced in E.coli.
Formulation:	PBS (pH 7.3) containing 1% BSA, 50% glycerol.
Concentration:	0.5 mg/ml
Purification:	Purified from mouse ascites fluids or tissue culture supernatant by affinity chromatography (protein A/G)
Conjugation:	HRP
Storage:	Store at -20°C as received.
Stability:	Stable for 12 months from date of receipt.
Predicted Protein Size:	16.5 kDa
Gene Name:	tissue differentiation-inducing non-protein coding RNA
Database Link:	<a href="#">NP_699206</a> <a href="#">Entrez Gene 257000 Human</a>
Background:	This locus is inferred to be non-protein-coding based on the observations that a) there is no homology support for predicted open reading frames; and b) the location of the longer predicted open reading frame renders the transcript a candidate for nonsense-mediated decay (NMD) as the stop codon is >50 nucleotides upstream of the terminal splice site. [provided by RefSeq, Feb 2009]
Synonyms:	FLJ90734



[View online »](#)

**Product images:**

HEK293T cells were transfected with the pCMV6-ENTRY control (Left lane) or pCMV6-ENTRY PLAC2 ([RC207313], Right lane) cDNA for 48 hrs and lysed. Equivalent amounts of cell lysates (5 ug per lane) were separated by SDS-PAGE and immunoblotted with anti-PLAC2 (1:500). Positive lysates [LY407086] (100ug) and [LC407086] (20ug) can be purchased separately from OriGene.