

## Product datasheet for **TA810454**

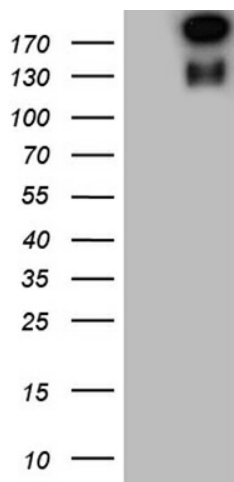
### MAP126 (SPAG5) Mouse Monoclonal Antibody [Clone ID: OTI1F3]

#### Product data:

Product Type:	Primary Antibodies
Clone Name:	OTI1F3
Applications:	WB
Recommended Dilution:	WB 1:2000
Reactivity:	Human
Host:	Mouse
Isotype:	IgG2a
Clonality:	Monoclonal
Immunogen:	Human recombinant protein fragment corresponding to amino acids 1-297 of human SPAG5 (NP_006452) produced in E.coli.
Formulation:	PBS (pH 7.3) containing 1% BSA, 50% glycerol and 0.02% sodium azide.
Concentration:	1 mg/ml
Purification:	Purified from mouse ascites fluids or tissue culture supernatant by affinity chromatography (protein A/G)
Conjugation:	Unconjugated
Storage:	Store at -20°C as received.
Stability:	Stable for 12 months from date of receipt.
Predicted Protein Size:	134.2 kDa
Gene Name:	sperm associated antigen 5
Database Link:	<a href="#">NP_006452</a> <a href="#">Entrez Gene 10615 Human</a> <a href="#">Q96R06</a>
Synonyms:	DEEPEST; hMAP126; MAP126
Protein Families:	Druggable Genome, Stem cell - Pluripotency



[View online »](#)

**Product images:**

HEK293T cells were transfected with the pCMV6-ENTRY control (Left lane) or pCMV6-ENTRY SPAG5 ([RC201783], Right lane) cDNA for 48 hrs and lysed. Equivalent amounts of cell lysates (5 ug per lane) were separated by SDS-PAGE and immunoblotted with anti-SPAG5 (1:2000). Positive lysates [LY401941] (100ug) and [LC401941] (20ug) can be purchased separately from OriGene.