

Product datasheet for **TA810450S**

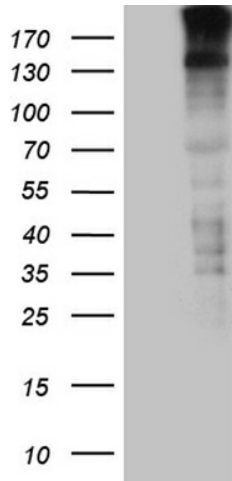
MAP126 (SPAG5) Mouse Monoclonal Antibody [Clone ID: OTI3F9]

Product data:

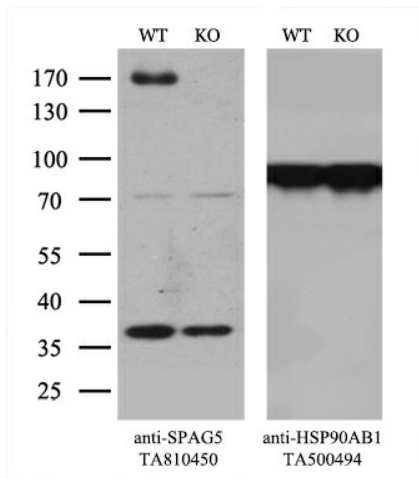
Product Type:	Primary Antibodies
Clone Name:	OTI3F9
Applications:	WB
Recommended Dilution:	WB 1:2000
Reactivity:	Human
Host:	Mouse
Isotype:	IgG2a
Clonality:	Monoclonal
Immunogen:	Human recombinant protein fragment corresponding to amino acids 1-297 of human SPAG5 (NP_006452) produced in E.coli.
Formulation:	PBS (pH 7.3) containing 1% BSA, 50% glycerol and 0.02% sodium azide.
Concentration:	1 mg/ml
Purification:	Purified from mouse ascites fluids or tissue culture supernatant by affinity chromatography (protein A/G)
Conjugation:	Unconjugated
Storage:	Store at -20°C as received.
Stability:	Stable for 12 months from date of receipt.
Predicted Protein Size:	134.2 kDa
Gene Name:	sperm associated antigen 5
Database Link:	NP_006452 Entrez Gene 10615 Human Q96R06
Background:	This gene encodes a protein associated with the mitotic spindle apparatus. The encoded protein may be involved in the functional and dynamic regulation of mitotic spindles. [provided by RefSeq, Jul 2008]
Synonyms:	DEEPEST; hMAP126; MAP126
Protein Families:	Druggable Genome, Stem cell - Pluripotency



[View online »](#)

Product images:


HEK293T cells were transfected with the pCMV6-ENTRY control (Left lane) or pCMV6-ENTRY SPAG5 [RC201783], Right lane) cDNA for 48 hrs and lysed. Equivalent amounts of cell lysates (5 ug per lane) were separated by SDS-PAGE and immunoblotted with anti-SPAG5. Positive lysates [LY401941] (100ug) and [LC401941] (20ug) can be purchased separately from OriGene.



Equivalent amounts of cell lysates (10 ug per lane) of wild-type 293T cells (WT, Cat# LC810293T) and SPAG5-Knockout 293T cells (KO, Cat# [LC812267]) were separated by SDS-PAGE and immunoblotted with anti-SPAG5 monoclonal antibody [TA810450], (1:200). Then the blotted membrane was stripped and reprobed with anti-HSP90AB1 antibody ([TA500494]) as a loading control.