

## Product datasheet for **TA810448S**

### TTF1 (NKX2-1) Mouse Monoclonal Antibody [Clone ID: OTI1C5]

#### Product data:

Product Type:	Primary Antibodies
Clone Name:	OTI1C5
Applications:	IHC, WB
Recommended Dilution:	IHC 1:500
Reactivity:	Human, Mouse, Rat
Host:	Mouse
Isotype:	IgG1
Clonality:	Monoclonal
Immunogen:	Full length human recombinant protein of human NKX2-1 ( NP_003308) produced in E.coli.
Formulation:	PBS (pH 7.3) containing 1% BSA, 50% glycerol and 0.02% sodium azide.
Concentration:	1 mg/ml
Purification:	Purified from mouse ascites fluids or tissue culture supernatant by affinity chromatography (protein A/G)
Conjugation:	Unconjugated
Storage:	Store at -20°C as received.
Stability:	Stable for 12 months from date of receipt.
Gene Name:	NK2 homeobox 1
Database Link:	<a href="#">NP_003308</a> <a href="#">Entrez Gene 21869 Mouse</a> <a href="#">Entrez Gene 25628 Rat</a> <a href="#">Entrez Gene 7080 Human</a> <a href="#">P43699</a>



[View online »](#)

**Background:**

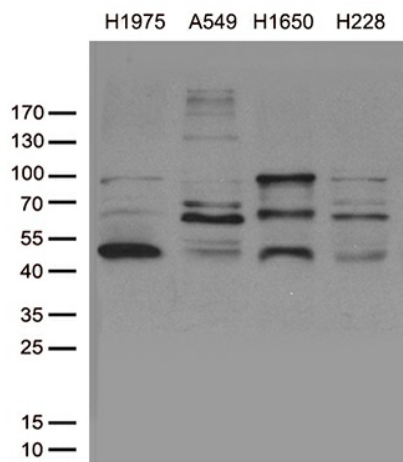
This gene encodes a protein initially identified as a thyroid-specific transcription factor. The encoded protein binds to the thyroglobulin promoter and regulates the expression of thyroid-specific genes but has also been shown to regulate the expression of genes involved in morphogenesis. Mutations and deletions in this gene are associated with benign hereditary chorea, choreoathetosis, congenital hypothyroidism, and neonatal respiratory distress, and may be associated with thyroid cancer. Multiple transcript variants encoding different isoforms have been found for this gene. This gene shares the symbol/alias 'TTF1' with another gene, transcription termination factor 1, which plays a role in ribosomal gene transcription. [provided by RefSeq, Feb 2014]

**Synonyms:**

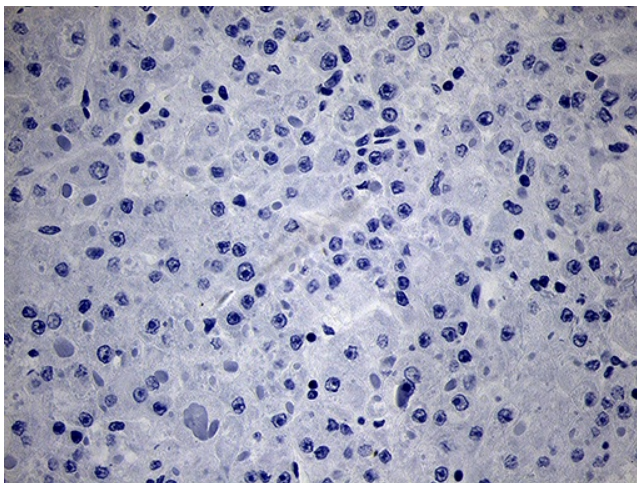
BCH; BHC; NK-2; NKX2.1; NKX2A; NMTC1; T/EBP; TEBP; TITF1; TTF-1; TTF1

**Protein Families:**

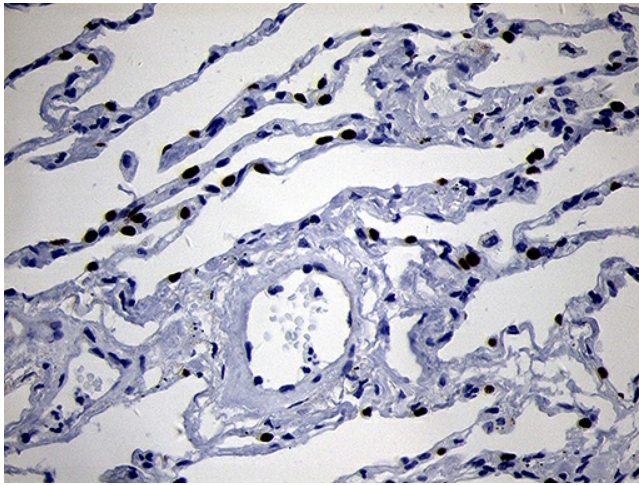
Druggable Genome, ES Cell Differentiation/IPS, Transcription Factors

**Product images:**


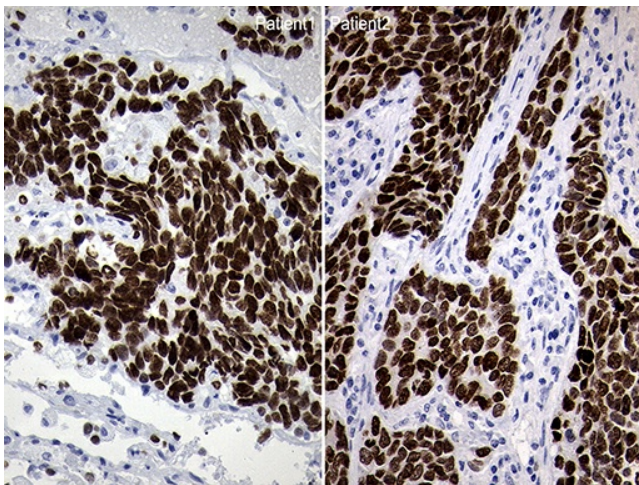
Western blot analysis of extracts (35ug) from cell lines by using anti-NKX2-1 monoclonal antibody (1:500).



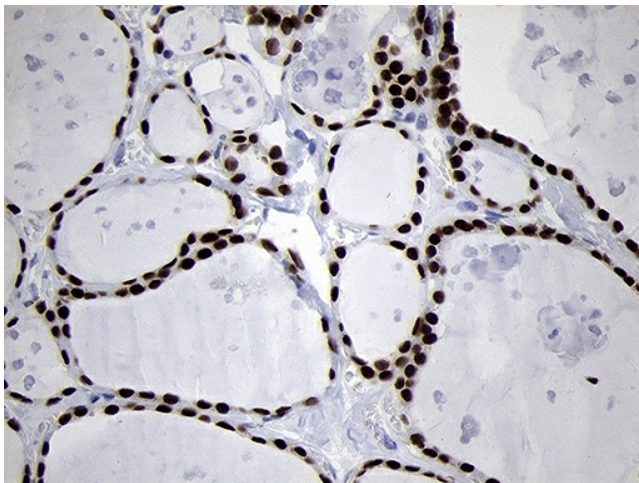
Immunohistochemical staining of paraffin-embedded Human liver tissue within the normal limits using anti-NKX2-1 mouse monoclonal antibody. This figure shows negative staining. (Heat-induced epitope retrieval by 1mM EDTA in 10mM Tris buffer (pH8.5) at 120°C for 3min, [TA810448]) (1:500)



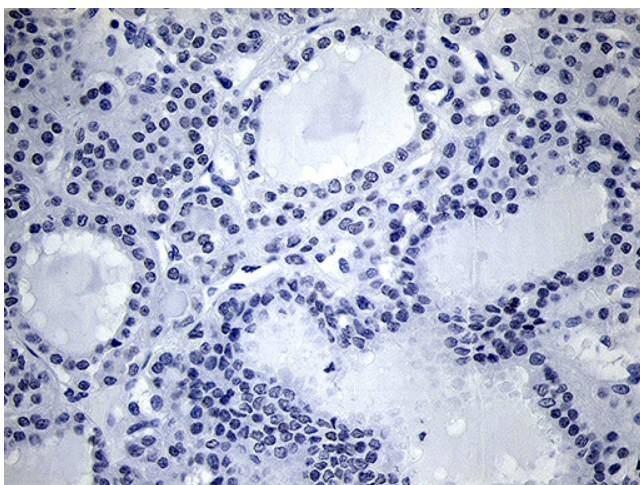
Immunohistochemical staining of paraffin-embedded Human lung tissue within the normal limits using anti-NKX2-1 mouse monoclonal antibody. (Heat-induced epitope retrieval by 1mM EDTA in 10mM Tris buffer (pH8.5) at 120°C for 3min, [TA810448]) (1:500)



Immunohistochemical staining of paraffin-embedded Carcinoma of Human lung tissue using anti-NKX2-1 mouse monoclonal antibody. (Heat-induced epitope retrieval by 1mM EDTA in 10mM Tris buffer (pH8.5) at 120°C for 3min, [TA810448]) (1:500)



Immunohistochemical staining of paraffin-embedded Human thyroid tissue within the normal limits using anti-NKX2-1 mouse monoclonal antibody. (Heat-induced epitope retrieval by 1mM EDTA in 10mM Tris buffer (pH8.5) at 120°C for 3min, [TA810448]) (1:500)



Immunohistochemical staining of paraffin-embedded Carcinoma of Human thyroid tissue using anti-NKX2-1 mouse monoclonal antibody. This figure shows negative staining. (Heat-induced epitope retrieval by 1mM EDTA in 10mM Tris buffer (pH8.5) at 120°C for 3min, [TA810448]) (1:500)