

## Product datasheet for **TA810439AM**

### AFAP (AFAP1) Mouse Monoclonal Antibody (Biotin conjugated) [Clone ID: OTI2A11]

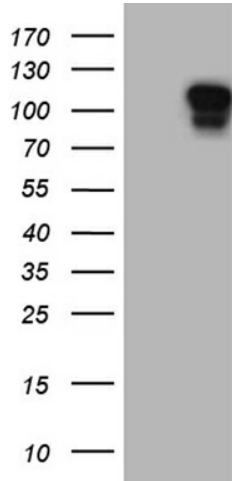
#### Product data:

Product Type:	Primary Antibodies
Clone Name:	OTI2A11
Applications:	WB
Recommended Dilution:	WB 1:500~2000
Reactivity:	Human, Mouse, Rat
Host:	Mouse
Isotype:	IgG1
Clonality:	Monoclonal
Immunogen:	Full length human recombinant protein of human AFAP1 (NP_067651) produced in E.coli.
Formulation:	PBS (pH 7.3) containing 1% BSA, 50% glycerol and 0.02% sodium azide.
Concentration:	0.5 mg/ml
Purification:	Purified from mouse ascites fluids or tissue culture supernatant by affinity chromatography (protein A/G)
Conjugation:	Biotin
Storage:	Store at -20°C as received.
Stability:	Stable for 12 months from date of receipt.
Predicted Protein Size:	80.5 kDa
Gene Name:	actin filament associated protein 1
Database Link:	<a href="#">NP_067651</a> <a href="#">Entrez Gene 70292 Mouse</a> <a href="#">Entrez Gene 140935 Rat</a> <a href="#">Entrez Gene 60312 Human</a> <a href="#">Q8N556</a>
Synonyms:	actin filament-associated protein, 110 kDa; actin filament associated protein 1; AFAP; AFAP, AFAP-110; AFAP-110; FLJ56849; OTTHUMP00000155170

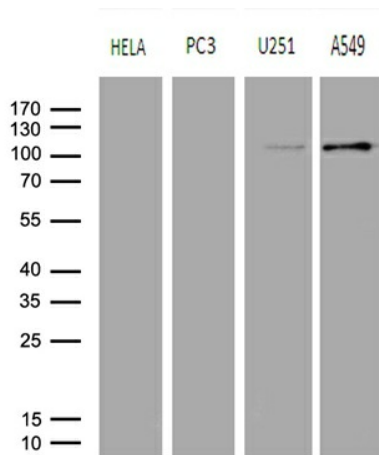


[View online »](#)

**Product images:**



HEK293T cells were transfected with the pCMV6-ENTRY control (Left lane) or pCMV6-ENTRY AFAP1 ([RC207421], Right lane) cDNA for 48 hrs and lysed. Equivalent amounts of cell lysates (5 ug per lane) were separated by SDS-PAGE and immunoblotted with anti-AFAP1 (1:2000). Positive lysates [LY402869] (100ug) and [LC402869] (20ug) can be purchased separately from OriGene.



Western blot analysis of extracts (35ug) from 4 different cell lines by using anti-AFAP1 monoclonal antibody (1:500).