

## Product datasheet for **TA810414M**

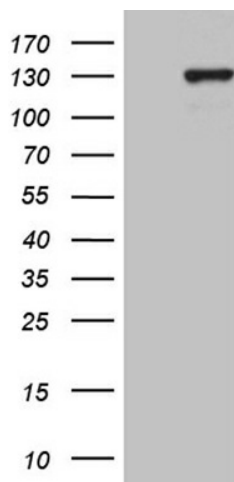
### **PMS1 Mouse Monoclonal Antibody [Clone ID: OTI5E10]**

#### **Product data:**

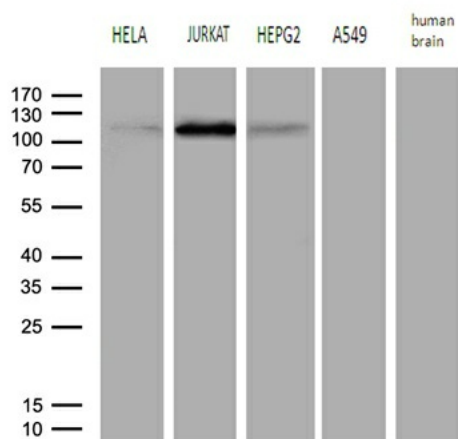
Product Type:	Primary Antibodies
Clone Name:	OTI5E10
Applications:	WB
Recommended Dilution:	WB 1:500~2000
Reactivity:	Human
Host:	Mouse
Isotype:	IgG1
Clonality:	Monoclonal
Immunogen:	Human recombinant protein fragment corresponding to amino acids 323-423 of human PMS1 (NP_000525) produced in E.coli.
Formulation:	PBS (pH 7.3) containing 1% BSA, 50% glycerol and 0.02% sodium azide.
Concentration:	1 mg/ml
Purification:	Purified from mouse ascites fluids or tissue culture supernatant by affinity chromatography (protein A/G)
Conjugation:	Unconjugated
Storage:	Store at -20°C as received.
Stability:	Stable for 12 months from date of receipt.
Predicted Protein Size:	105.7 kDa
Gene Name:	PMS1 homolog 1, mismatch repair system component
Database Link:	<a href="#">NP_000525</a> <a href="#">Entrez Gene 5378 Human</a> <a href="#">P54277</a>
Synonyms:	HNPCC3; hPMS1; MLH2; PMSL1
Protein Families:	Druggable Genome, Transcription Factors

[View online »](#)

## Product images:



HEK293T cells were transfected with the pCMV6-ENTRY control (Cat# [PS100001], Left lane) or pCMV6-ENTRY PMS1 (Cat# [RC217412], Right lane) cDNA for 48 hrs and lysed. Equivalent amounts of cell lysates (5 ug per lane) were separated by SDS-PAGE and immunoblotted with anti-PMS1 (Cat# [TA810414])(1:2000). Positive lysates [LY424657] (100ug) and [LC424657] (20ug) can be purchased separately from OriGene.



Western blot analysis of extracts (35ug) from 4 different cell lines and human brain tissue lysate by using anti-PMS1 monoclonal antibody (1:500).