

Product datasheet for **TA810394M**

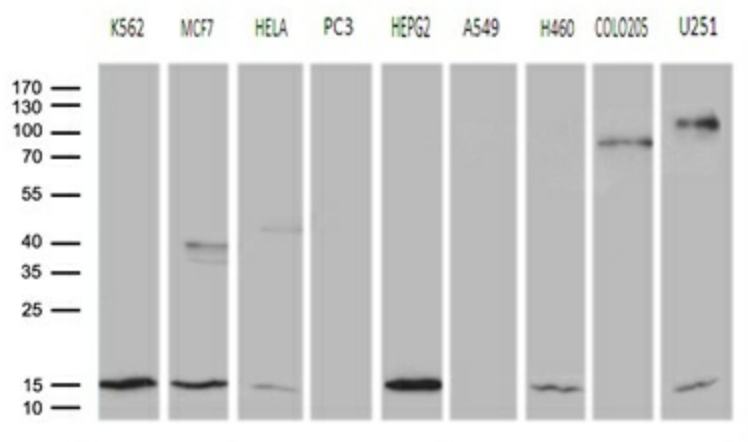
CISD2 Mouse Monoclonal Antibody [Clone ID: OTI4D12]

Product data:

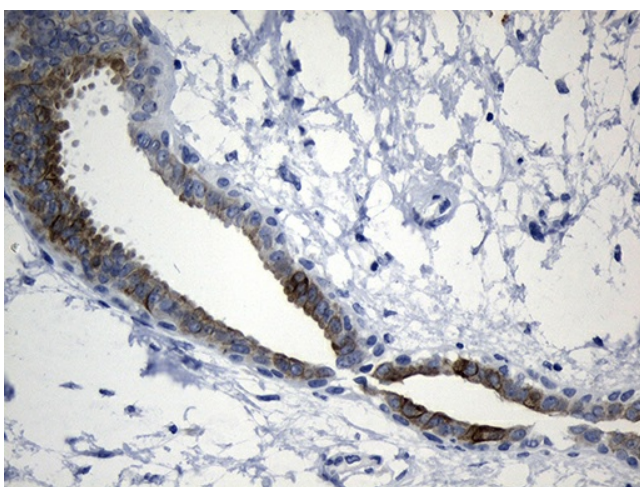
Product Type:	Primary Antibodies
Clone Name:	OTI4D12
Applications:	IHC, WB
Recommended Dilution:	WB 1:500, IHC 1:500
Reactivity:	Human, Mouse, Rat
Host:	Mouse
Isotype:	IgG1
Clonality:	Monoclonal
Immunogen:	Full length human recombinant protein of human CISD2 (NP_001008389) produced in E.coli.
Formulation:	PBS (pH 7.3) containing 1% BSA, 50% glycerol and 0.02% sodium azide.
Concentration:	1 mg/ml
Purification:	Purified from mouse ascites fluids or tissue culture supernatant by affinity chromatography (protein A/G)
Conjugation:	Unconjugated
Storage:	Store at -20°C as received.
Stability:	Stable for 12 months from date of receipt.
Gene Name:	CDGSH iron sulfur domain 2
Database Link:	NP_001008389 Entrez Gene 67006 Mouse Entrez Gene 295457 Rat Entrez Gene 493856 Human Q8N5K1
Synonyms:	ERIS; Miner1; NAF-1; WFS2; ZCD2
Protein Families:	Transmembrane

[View online »](#)

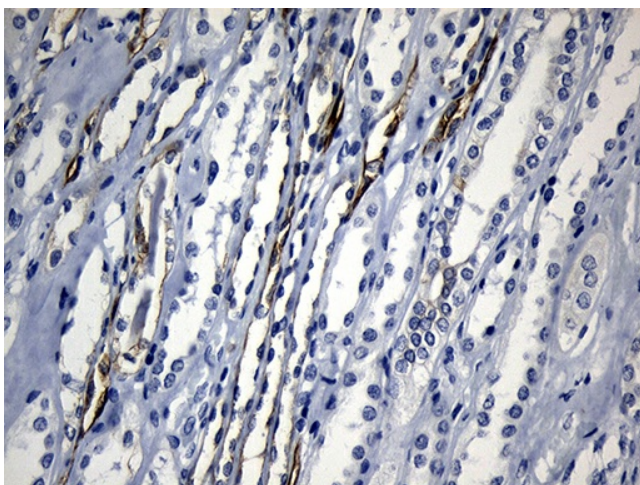
Product images:



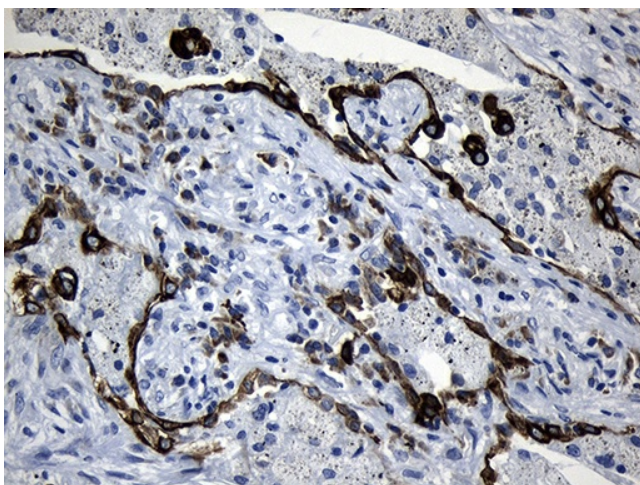
Western blot analysis of extracts (35ug) from 9 different cell lines by using anti-CISD2 monoclonal antibody (1:500).



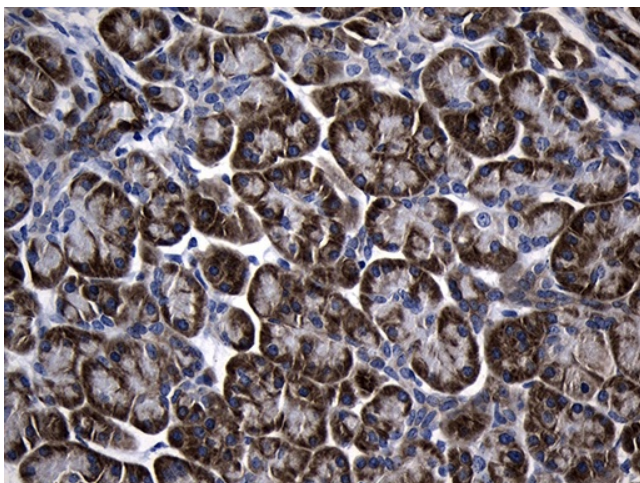
Immunohistochemical staining of paraffin-embedded Human breast tissue within the normal limits using anti-CISD2 mouse monoclonal antibody. Heat-induced epitope retrieval by EDTA solution buffer pH 8.0 at 120°C for 3 min.



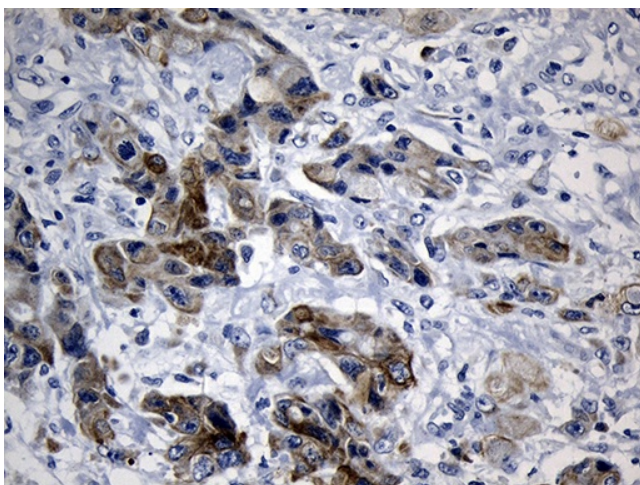
Immunohistochemical staining of paraffin-embedded Human Kidney tissue within the normal limits using anti-CISD2 mouse monoclonal antibody. Heat-induced epitope retrieval by EDTA solution buffer pH 8.0 at 120°C for 3 min.



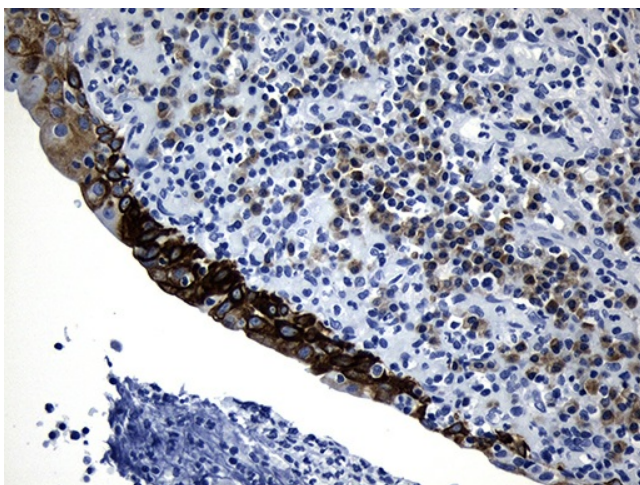
Immunohistochemical staining of paraffin-embedded Carcinoma of Human lung tissue using anti-CISD2 mouse monoclonal antibody. Heat-induced epitope retrieval by EDTA solution buffer pH 8.0 at 120°C for 3 min.



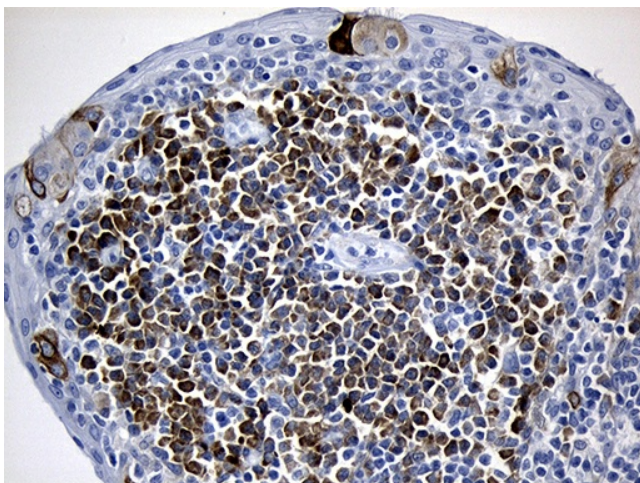
Immunohistochemical staining of paraffin-embedded Human pancreas tissue within the normal limits using anti-CISD2 mouse monoclonal antibody. Heat-induced epitope retrieval by EDTA solution buffer pH 8.0 at 120°C for 3 min.



Immunohistochemical staining of paraffin-embedded Carcinoma of Human pancreas tissue using anti-CISD2 mouse monoclonal antibody. Heat-induced epitope retrieval by EDTA solution buffer pH 8.0 at 120°C for 3 min.



Immunohistochemical staining of paraffin-embedded Human lymph node tissue within the normal limits using anti-CISD2 mouse monoclonal antibody. Heat-induced epitope retrieval by EDTA solution buffer pH 8.0 at 120°C for 3 min.



Immunohistochemical staining of paraffin-embedded Human tonsil within the normal limits using anti-CISD2 mouse monoclonal antibody. Heat-induced epitope retrieval by EDTA solution buffer pH 8.0 at 120°C for 3 min.