

## Product datasheet for **TA810394AM**

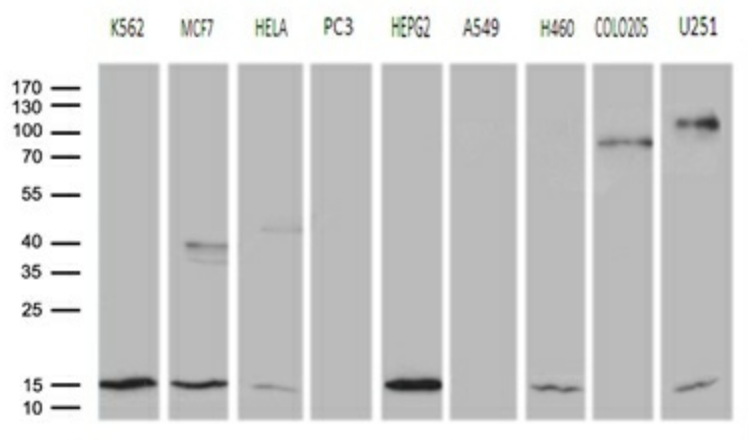
### CISD2 Mouse Monoclonal Antibody (Biotin conjugated) [Clone ID: OTI4D12]

#### Product data:

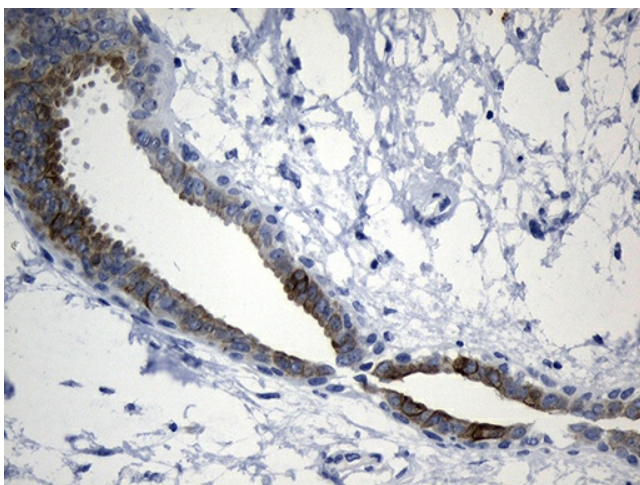
Product Type:	Primary Antibodies
Clone Name:	OTI4D12
Applications:	IHC, WB
Recommended Dilution:	WB 1:500, IHC 1:500
Reactivity:	Human, Mouse, Rat
Host:	Mouse
Isotype:	IgG1
Clonality:	Monoclonal
Immunogen:	Full length human recombinant protein of human CISD2 (NP_001008389) produced in E.coli.
Formulation:	PBS (pH 7.3) containing 1% BSA, 50% glycerol and 0.02% sodium azide.
Concentration:	0.5 mg/ml
Purification:	Purified from mouse ascites fluids or tissue culture supernatant by affinity chromatography (protein A/G)
Conjugation:	Biotin
Storage:	Store at -20°C as received.
Stability:	Stable for 12 months from date of receipt.
Gene Name:	CDGSH iron sulfur domain 2
Database Link:	<a href="#">NP_001008389</a> <a href="#">Entrez Gene 67006 MouseEntrez Gene 295457 RatEntrez Gene 493856 Human Q8N5K1</a>
Synonyms:	ERIS; Miner1; NAF-1; WFS2; ZCD2
Protein Families:	Transmembrane



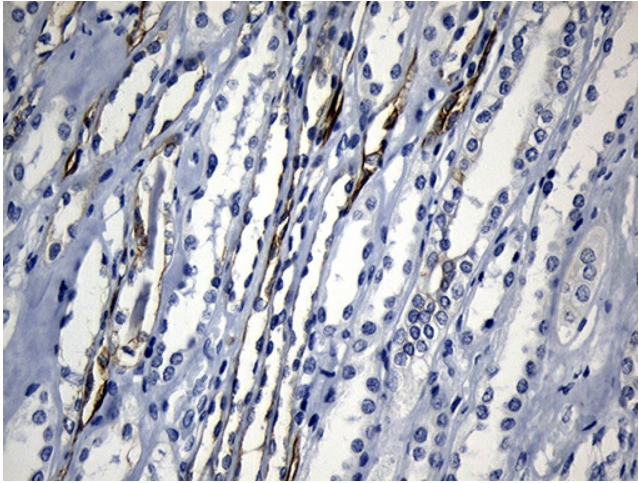
[View online »](#)

**Product images:**

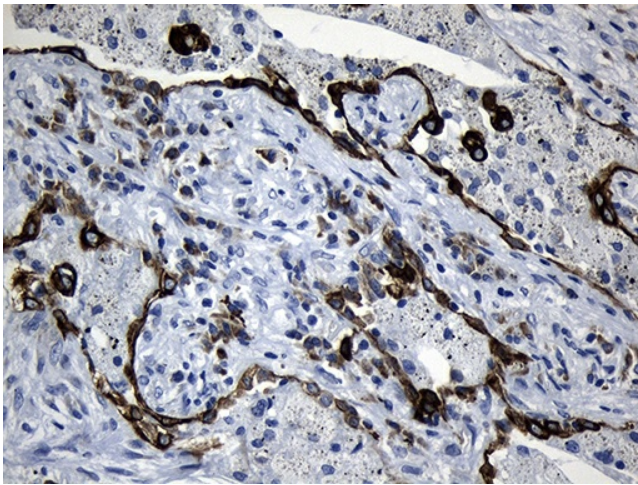
Western blot analysis of extracts (35ug) from 9 different cell lines by using anti-CISD2 monoclonal antibody (1:500).



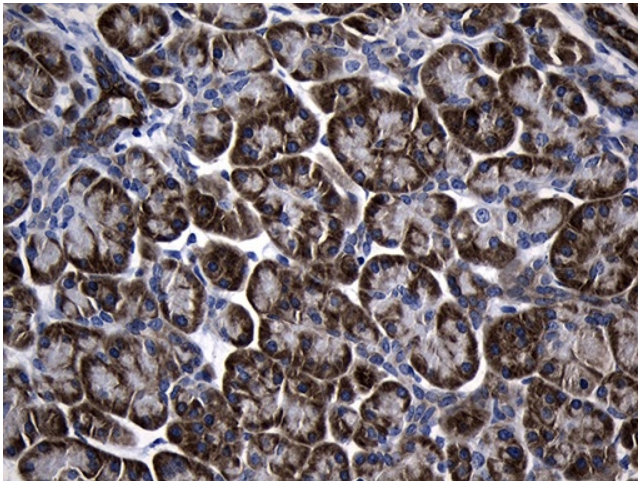
Immunohistochemical staining of paraffin-embedded Human breast tissue within the normal limits using anti-CISD2 mouse monoclonal antibody. (Heat-induced epitope retrieval by 1mM EDTA in 10mM Tris buffer (pH8.5) at 120°C for 3min, [TA810394]) (1:500)



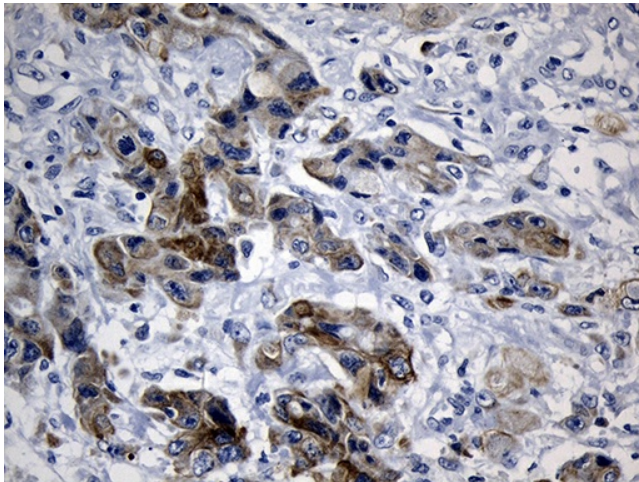
Immunohistochemical staining of paraffin-embedded Human Kidney tissue within the normal limits using anti-CISD2 mouse monoclonal antibody. (Heat-induced epitope retrieval by 1mM EDTA in 10mM Tris buffer (pH8.5) at 120°C for 3min, [TA810394]) (1:500)



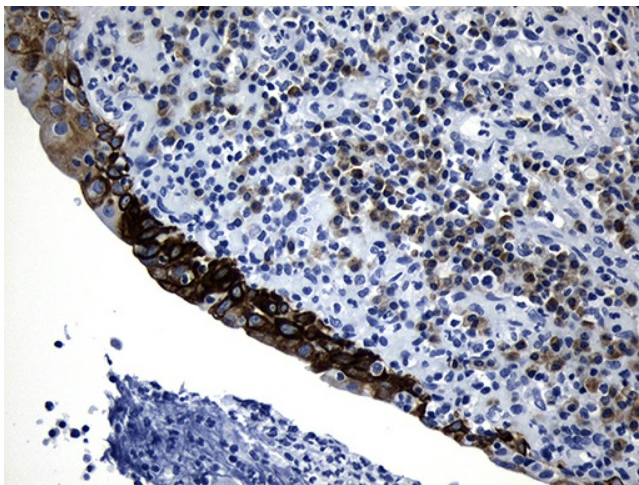
Immunohistochemical staining of paraffin-embedded Carcinoma of Human lung tissue using anti-CISD2 mouse monoclonal antibody. (Heat-induced epitope retrieval by 1mM EDTA in 10mM Tris buffer (pH8.5) at 120°C for 3min, [TA810394]) (1:500)



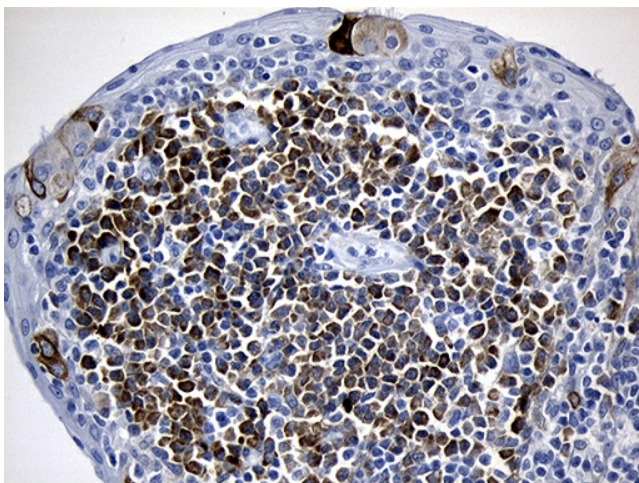
Immunohistochemical staining of paraffin-embedded Human pancreas tissue within the normal limits using anti-CISD2 mouse monoclonal antibody. (Heat-induced epitope retrieval by 1mM EDTA in 10mM Tris buffer (pH8.5) at 120°C for 3min, [TA810394]) (1:500)



Immunohistochemical staining of paraffin-embedded Carcinoma of Human pancreas tissue using anti-CISD2 mouse monoclonal antibody. (Heat-induced epitope retrieval by 1mM EDTA in 10mM Tris buffer (pH8.5) at 120°C for 3min, [TA810394]) (1:500)



Immunohistochemical staining of paraffin-embedded Human lymph node tissue within the normal limits using anti-CISD2 mouse monoclonal antibody. (Heat-induced epitope retrieval by 1mM EDTA in 10mM Tris buffer (pH8.5) at 120°C for 3min, [TA810394]) (1:500)



Immunohistochemical staining of paraffin-embedded Human tonsil within the normal limits using anti-CISD2 mouse monoclonal antibody. (Heat-induced epitope retrieval by 1mM EDTA in 10mM Tris buffer (pH8.5) at 120°C for 3min, [TA810394]) (1:500)