

## Product datasheet for **TA810384S**

### Metabotropic Glutamate Receptor 4 (GRM4) Mouse Monoclonal Antibody [Clone ID: OTI6D1]

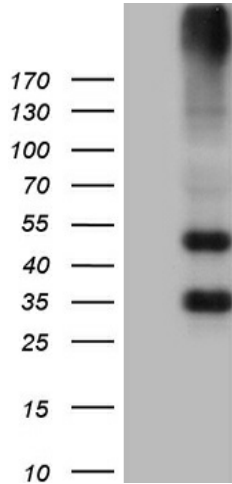
#### Product data:

Product Type:	Primary Antibodies
Clone Name:	OTI6D1
Applications:	IHC, WB
Recommended Dilution:	WB 1:2000, IHC 1:500
Reactivity:	Human, Mouse, Rat
Host:	Mouse
Isotype:	IgG2a
Clonality:	Monoclonal
Immunogen:	Human recombinant protein fragment corresponding to amino acids 126-407 of human GRM4 (NP_000832) produced in E.coli.
Formulation:	PBS (pH 7.3) containing 1% BSA, 50% glycerol and 0.02% sodium azide.
Concentration:	1 mg/ml
Purification:	Purified from mouse ascites fluids or tissue culture supernatant by affinity chromatography (protein A/G)
Conjugation:	Unconjugated
Storage:	Store at -20°C as received.
Stability:	Stable for 12 months from date of receipt.
Predicted Protein Size:	101.87 kDa
Gene Name:	glutamate metabotropic receptor 4
Database Link:	<a href="#">NP_000832</a> <a href="#">Entrez Gene 24417 Rat</a> <a href="#">Entrez Gene 268934 Mouse</a> <a href="#">Entrez Gene 2914 Human</a> <a href="#">Q14833</a>
Synonyms:	GPRC1D; mGlu4; MGLUR4
Protein Families:	Druggable Genome, GPCR, Transmembrane
Protein Pathways:	Neuroactive ligand-receptor interaction, Taste transduction

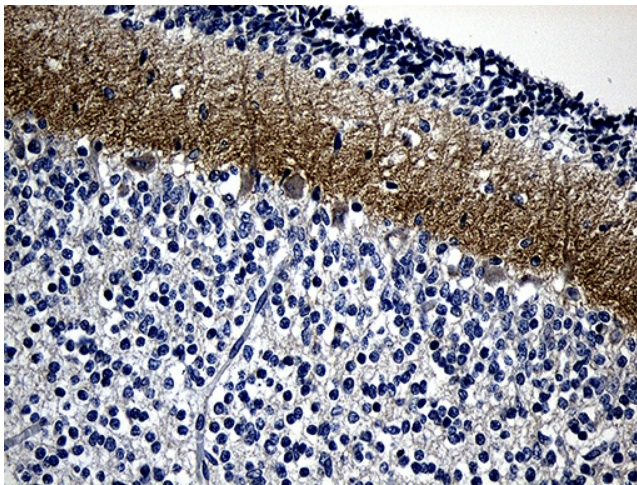


[View online »](#)

**Product images:**



HEK293T cells were transfected with the pCMV6-ENTRY control (Cat# [PS100001], Left lane) or pCMV6-ENTRY GRM4 (Cat# [RC223673], Right lane) cDNA for 48 hrs and lysed. Equivalent amounts of cell lysates (5 ug per lane) were separated by SDS-PAGE and immunoblotted with anti-GRM4 (Cat# [TA810384])(1:2000). Positive lysates [LY400298] (100ug) and [LC400298] (20ug) can be purchased separately from OriGene.



Immunohistochemical staining of paraffin-embedded Human embryonic cerebellum within the normal limits using anti-GRM4 mouse monoclonal antibody. (Heat-induced epitope retrieval by 1mM EDTA in 10mM Tris buffer (pH8.5) at 120°C for 3min, [TA810384]) (1:500)