

## Product datasheet for **TA810382AM**

### Saitohin (STH) Mouse Monoclonal Antibody (Biotin conjugated) [Clone ID: OTI7A12]

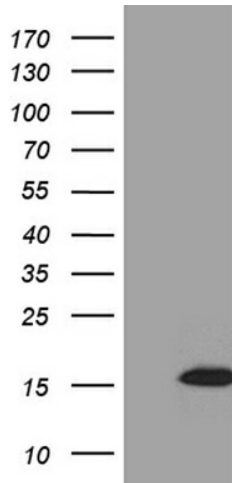
#### Product data:

Product Type:	Primary Antibodies
Clone Name:	OTI7A12
Applications:	WB
Recommended Dilution:	WB 1:2000
Reactivity:	Human
Host:	Mouse
Isotype:	IgG1
Clonality:	Monoclonal
Immunogen:	Full length human recombinant protein of human STH (NP_001007533) produced in E.coli.
Formulation:	PBS (pH 7.3) containing 1% BSA, 50% glycerol and 0.02% sodium azide.
Concentration:	0.5 mg/ml
Purification:	Purified from mouse ascites fluids or tissue culture supernatant by affinity chromatography (protein A/G)
Conjugation:	Biotin
Storage:	Store at -20°C as received.
Stability:	Stable for 12 months from date of receipt.
Gene Name:	saitohin
Database Link:	<a href="#">NP_001007533</a> <a href="#">Entrez Gene 246744 Human</a> <a href="#">Q8IWL8</a>
Synonyms:	MAPTIT



[View online »](#)

## Product images:



HEK293T cells were transfected with the pCMV6-ENTRY control (Left lane) or pCMV6-ENTRY STH ([RC224514], Right lane) cDNA for 48 hrs and lysed. Equivalent amounts of cell lysates (5 ug per lane) were separated by SDS-PAGE and immunoblotted with anti-STH (1:2000).