

Product datasheet for **TA810371BM**

TRAF5 Mouse Monoclonal Antibody (HRP conjugated) [Clone ID: OTI7A3]

Product data:

Product Type:	Primary Antibodies
Clone Name:	OTI7A3
Applications:	WB
Recommended Dilution:	WB 1:500
Reactivity:	Human
Host:	Mouse
Isotype:	IgG1
Clonality:	Monoclonal
Immunogen:	Human recombinant protein fragment corresponding to amino acids 334-557 of human TRAF5 (NP_004610) produced in E.coli.
Formulation:	PBS (pH 7.3) containing 1% BSA, 50% glycerol.
Concentration:	0.5 mg/ml
Purification:	Purified from mouse ascites fluids or tissue culture supernatant by affinity chromatography (protein A/G)
Conjugation:	HRP
Storage:	Store at -20°C as received.
Stability:	Stable for 12 months from date of receipt.
Predicted Protein Size:	64.2 kDa
Gene Name:	TNF receptor associated factor 5
Database Link:	NP_004610 Entrez Gene 7188 Human O00463



[View online »](#)

Background:

The scaffold protein encoded by this gene is a member of the tumor necrosis factor receptor-associated factor (TRAF) protein family and contains a meprin and TRAF homology (MATH) domain, a RING-type zinc finger, and two TRAF-type zinc fingers. TRAF proteins are associated with, and mediate signal transduction from members of the TNF receptor superfamily. This protein is one of the components of a multiple protein complex which binds to tumor necrosis factor (TNF) receptor cytoplasmic domains and mediates TNF-induced activation. Alternate transcriptional splice variants have been characterized. [provided by RefSeq, Jul 2008]

Synonyms:

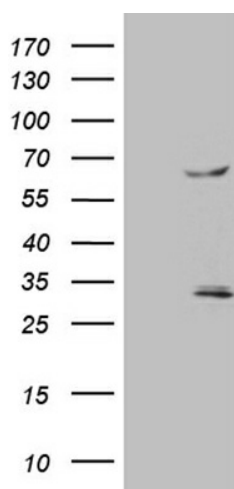
MGC:39780; RNF84

Protein Families:

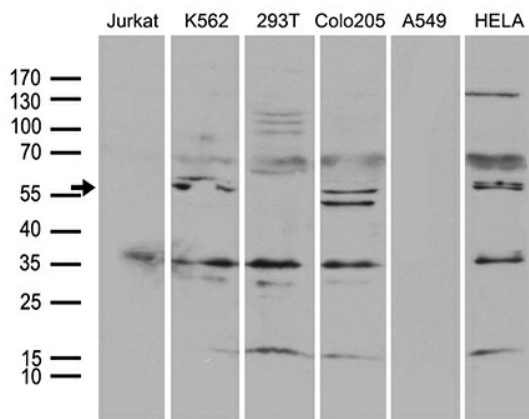
Druggable Genome

Protein Pathways:

Pathways in cancer, Small cell lung cancer

Product images:


HEK293T cells were transfected with the pCMV6-ENTRY control (Cat# [PS100001], Left lane) or pCMV6-ENTRY TRAF5 (Cat# [RC219243], Right lane) cDNA for 48 hrs and lysed. Equivalent amounts of cell lysates (5 ug per lane) were separated by SDS-PAGE and immunoblotted with anti-TRAF5 (Cat# [TA810371])(1:500). Positive lysates [LY417875] (100ug) and [LC417875] (20ug) can be purchased separately from OriGene.



Western blot analysis of extracts (35ug) from 6 different cell lines by using anti-TRAF5 monoclonal antibody (1:500).