

## Product datasheet for TA810369M

### PSMA7 Mouse Monoclonal Antibody [Clone ID: OTI4A9]

#### Product data:

Product Type:	Primary Antibodies
Clone Name:	OTI4A9
Applications:	WB
Recommended Dilution:	WB 1:500~2000
Reactivity:	Human, Mouse, Rat
Host:	Mouse
Isotype:	IgG2a
Clonality:	Monoclonal
Immunogen:	Full length human recombinant protein of human PSMA7 (NP_002783) produced in HEK293T cell.
Formulation:	PBS (pH 7.3) containing 1% BSA, 50% glycerol and 0.02% sodium azide.
Concentration:	1 mg/ml
Purification:	Purified from mouse ascites fluids or tissue culture supernatant by affinity chromatography (protein A/G)
Conjugation:	Unconjugated
Storage:	Store at -20°C as received.
Stability:	Stable for 12 months from date of receipt.
Predicted Protein Size:	27.7 kDa
Gene Name:	proteasome subunit alpha 7
Database Link:	<a href="#">NP_002783</a> <a href="#">Entrez Gene 26444 Mouse</a> <a href="#">Entrez Gene 29674 Rat</a> <a href="#">Entrez Gene 5688 Human</a> <a href="#">O14818</a>


[View online »](#)

**Background:**

The 26S proteasome is a multicatalytic proteinase complex with a highly ordered structure composed of 2 complexes, a 20S core and a 19S regulator. The 20S core is composed of 4 rings of 28 non-identical subunits; 2 rings are composed of 7 alpha subunits and 2 rings are composed of 7 beta subunits. Proteasomes are distributed throughout eukaryotic cells at a high concentration and cleave peptides in an ATP/ubiquitin-dependent process in a non-lysosomal pathway. This gene encodes a member of the peptidase T1A family that functions as a 20S core alpha subunit. The encoded protein interacts with the hepatitis B virus X protein and plays a role in regulating hepatitis C virus internal ribosome entry site (IRES) activity, an activity essential for viral replication. The encoded protein also plays a role in the cellular stress response by regulating hypoxia-inducible factor-1 alpha. A pseudogene of this gene is located on the long arm of chromosome 9. [provided by RefSeq, Jul 2012]

**Synonyms:**

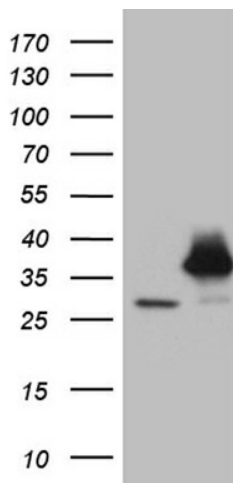
C6; HEL-S-276; HSPC; RC6-1; XAPC7

**Protein Families:**

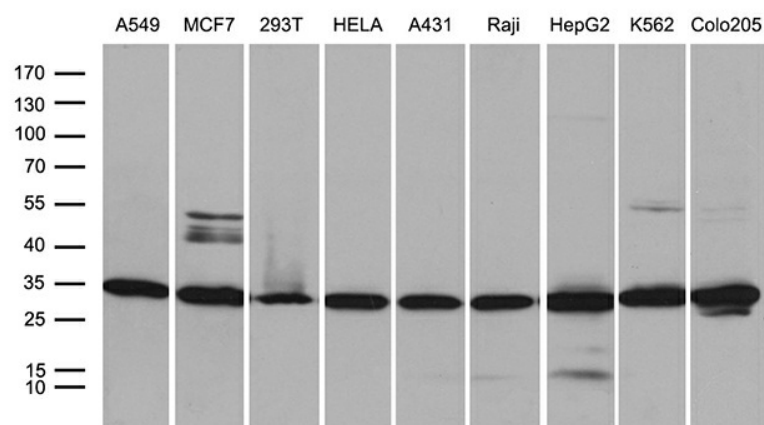
Druggable Genome, Protease

**Protein Pathways:**

Proteasome

**Product images:**


HEK293T cells were transfected with the pCMV6-ENTRY control (Left lane) or pCMV6-ENTRY PSMA7 ([RC201169], Right lane) cDNA for 48 hrs and lysed. Equivalent amounts of cell lysates (5 ug per lane) were separated by SDS-PAGE and immunoblotted with anti-PSMA7 (1:2000). Positive lysates [LY400987] (100ug) and [LC400987] (20ug) can be purchased separately from OriGene.



Western blot analysis of extracts (35ug) from 9 different cell lines by using anti-PSMA7 monoclonal antibody (1:500).