

## Product datasheet for **TA810350AM**

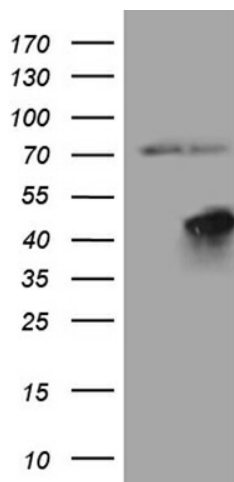
### **FBXO25 Mouse Monoclonal Antibody (Biotin conjugated) [Clone ID: OTI1A1]**

#### **Product data:**

Product Type:	Primary Antibodies
Clone Name:	OTI1A1
Applications:	WB
Recommended Dilution:	WB 1:2000
Reactivity:	Human, Mouse, Rat
Host:	Mouse
Isotype:	IgG1
Clonality:	Monoclonal
Immunogen:	Human recombinant protein fragment corresponding to amino acids 1-191 of human FBXO25 (NP_904357) produced in E.coli.
Formulation:	PBS (pH 7.3) containing 1% BSA, 50% glycerol and 0.02% sodium azide.
Concentration:	0.5 mg/ml
Purification:	Purified from mouse ascites fluids or tissue culture supernatant by affinity chromatography (protein A/G)
Conjugation:	Biotin
Storage:	Store at -20°C as received.
Stability:	Stable for 12 months from date of receipt.
Predicted Protein Size:	43.1 kDa
Gene Name:	F-box protein 25
Database Link:	<a href="#">NP_904357</a> <a href="#">Entrez Gene 26260 Human</a> <a href="#">Q8TCJ0</a>
Synonyms:	FBX25



[View online »](#)

**Product images:**

HEK293T cells were transfected with the pCMV6-ENTRY control (Left lane) or pCMV6-ENTRY FBXO25 ([RC208287], Right lane) cDNA for 48 hrs and lysed. Equivalent amounts of cell lysates (5 ug per lane) were separated by SDS-PAGE and immunoblotted with anti-FBXO25 (1:2000). Positive lysates [LY405203] (100ug) and [LC405203] (20ug) can be purchased separately from OriGene.