

Product datasheet for **TA810349AM**

PSMA7 Mouse Monoclonal Antibody (Biotin conjugated) [Clone ID: OTI9B6]

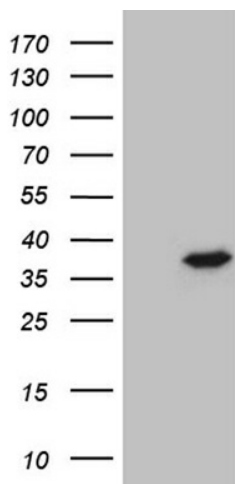
Product data:

Product Type:	Primary Antibodies
Clone Name:	OTI9B6
Applications:	WB
Recommended Dilution:	WB 1:500~2000
Reactivity:	Human, Mouse, Rat
Host:	Mouse
Isotype:	IgG2a
Clonality:	Monoclonal
Immunogen:	Full length human recombinant protein of human PSMA7 (NP_002783) produced in HEK293T cell.
Formulation:	PBS (pH 7.3) containing 1% BSA, 50% glycerol and 0.02% sodium azide.
Concentration:	0.5 mg/ml
Purification:	Purified from mouse ascites fluids or tissue culture supernatant by affinity chromatography (protein A/G)
Conjugation:	Biotin
Storage:	Store at -20°C as received.
Stability:	Stable for 12 months from date of receipt.
Predicted Protein Size:	27.7 kDa
Gene Name:	proteasome subunit alpha 7
Database Link:	NP_002783 Entrez Gene 26444 Mouse Entrez Gene 29674 Rat Entrez Gene 5688 Human O14818
Synonyms:	C6; HEL-S-276; HSPC; RC6-1; XAPC7
Protein Families:	Druggable Genome, Protease
Protein Pathways:	Proteasome

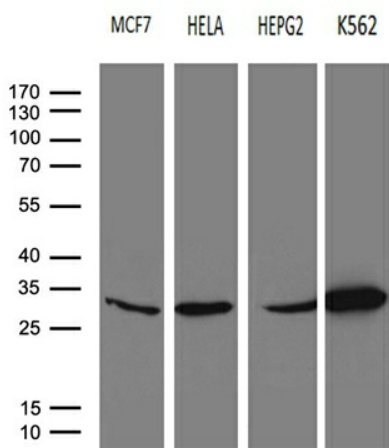


[View online »](#)

Product images:



HEK293T cells were transfected with the pCMV6-ENTRY control (Left lane) or pCMV6-ENTRY PSMA7 ([RC201169], Right lane) cDNA for 48 hrs and lysed. Equivalent amounts of cell lysates (5 ug per lane) were separated by SDS-PAGE and immunoblotted with anti-PSMA7 (1:2000). Positive lysates [LY400987] (100ug) and [LC400987] (20ug) can be purchased separately from OriGene.



Western blot analysis of extracts (35ug) from 4 different cell lines by using anti-PSMA7 monoclonal antibody (1:500).