

## Product datasheet for **TA810347BM**

### PSMA7 Mouse Monoclonal Antibody (HRP conjugated) [Clone ID: OT15F6]

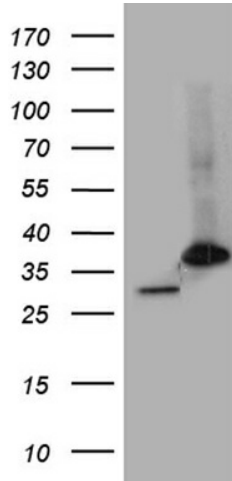
#### Product data:

Product Type:	Primary Antibodies
Clone Name:	OT15F6
Applications:	IHC, WB
Recommended Dilution:	WB 1:500~2000, IHC 1:2000
Reactivity:	Human, Mouse, Rat
Host:	Mouse
Isotype:	IgG2b
Clonality:	Monoclonal
Immunogen:	Full length human recombinant protein of human PSMA7 (NP_002783) produced in HEK293T cell.
Formulation:	PBS (pH 7.3) containing 1% BSA, 50% glycerol.
Concentration:	0.5 mg/ml
Purification:	Purified from mouse ascites fluids or tissue culture supernatant by affinity chromatography (protein A/G)
Conjugation:	HRP
Storage:	Store at -20°C as received.
Stability:	Stable for 12 months from date of receipt.
Predicted Protein Size:	27.7 kDa
Gene Name:	proteasome subunit alpha 7
Database Link:	<a href="#">NP_002783</a> <a href="#">Entrez Gene 26444 Mouse</a> <a href="#">Entrez Gene 29674 Rat</a> <a href="#">Entrez Gene 5688 Human</a> <a href="#">O14818</a>
Synonyms:	C6; HEL-S-276; HSPC; RC6-1; XAPC7
Protein Families:	Druggable Genome, Protease
Protein Pathways:	Proteasome

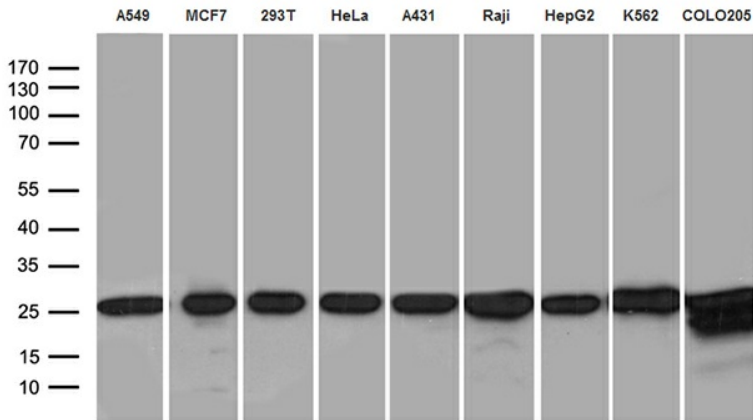


[View online »](#)

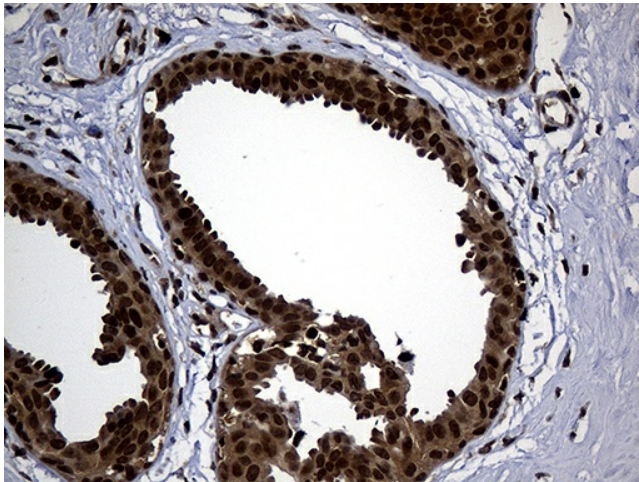
**Product images:**



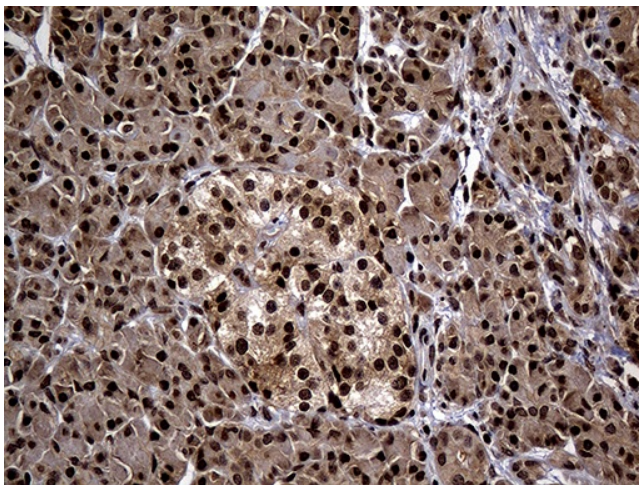
HEK293T cells were transfected with the pCMV6-ENTRY control (Cat# [PS100001], Left lane) or pCMV6-ENTRY PSMA7 (Cat# [RC201169], Right lane) cDNA for 48 hrs and lysed. Equivalent amounts of cell lysates (5 ug per lane) were separated by SDS-PAGE and immunoblotted with anti-PSMA7 (Cat# [TA810347])(1:2000). Positive lysates [LY400987] (100ug) and [LC400987] (20ug) can be purchased separately from OriGene.



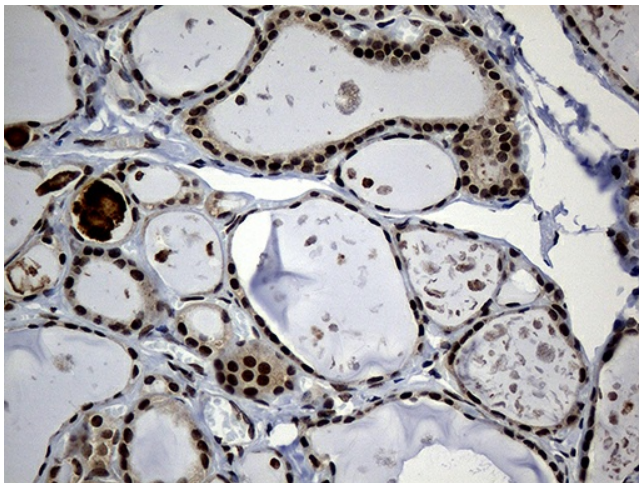
Western blot analysis of extracts (35ug) from 9 different cell lines by using anti-PSMA7 monoclonal antibody (1:500).



Immunohistochemical staining of paraffin-embedded Human breast tissue within the normal limits using anti-PSMA7 mouse monoclonal antibody. (Heat-induced epitope retrieval by 1mM EDTA in 10mM Tris buffer (pH8.5) at 120°C for 3min, [TA810347]) (1:2000)



Immunohistochemical staining of paraffin-embedded Human pancreas tissue within the normal limits using anti-PSMA7 mouse monoclonal antibody. (Heat-induced epitope retrieval by 1mM EDTA in 10mM Tris buffer (pH8.5) at 120°C for 3min, [TA810347]) (1:2000)



Immunohistochemical staining of paraffin-embedded Human thyroid tissue within the normal limits using anti-PSMA7 mouse monoclonal antibody. (Heat-induced epitope retrieval by 1mM EDTA in 10mM Tris buffer (pH8.5) at 120°C for 3min, [TA810347]) (1:2000)