

## Product datasheet for **TA810344S**

### PSMA7 Mouse Monoclonal Antibody [Clone ID: OTI10A6]

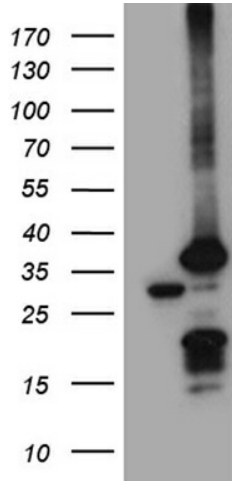
#### Product data:

|                         |   |
|-------------------------|---|
| Product Type:           | Primary Antibodies  |
| Clone Name:             | OTI10A6   |
| Applications:           | WB  |
| Recommended Dilution:   | WB 1:500~2000   |
| Reactivity:             | Human, Mouse, Rat   |
| Host:                   | Mouse   |
| Isotype:                | IgG2a   |
| Clonality:              | Monoclonal  |
| Immunogen:              | Full length human recombinant protein of human PSMA7 (NP_002783) produced in HEK293T cell.  |
| Formulation:            | PBS (pH 7.3) containing 1% BSA, 50% glycerol and 0.02% sodium azide.  |
| Concentration:          | 1 mg/ml   |
| Purification:           | Purified from mouse ascites fluids or tissue culture supernatant by affinity chromatography (protein A/G)   |
| Conjugation:            | Unconjugated  |
| Storage:                | Store at -20°C as received.   |
| Stability:              | Stable for 12 months from date of receipt.  |
| Predicted Protein Size: | 27.7 kDa  |
| Gene Name:              | proteasome subunit alpha 7  |
| Database Link:          | <a href="#">NP_002783</a><br><a href="#">Entrez Gene 26444 Mouse</a> <a href="#">Entrez Gene 29674 Rat</a> <a href="#">Entrez Gene 5688 Human</a><br><a href="#">O14818</a> |
| Synonyms:               | C6; HEL-S-276; HSPC; RC6-1; XAPC7   |
| Protein Families:       | Druggable Genome, Protease  |
| Protein Pathways:       | Proteasome  |

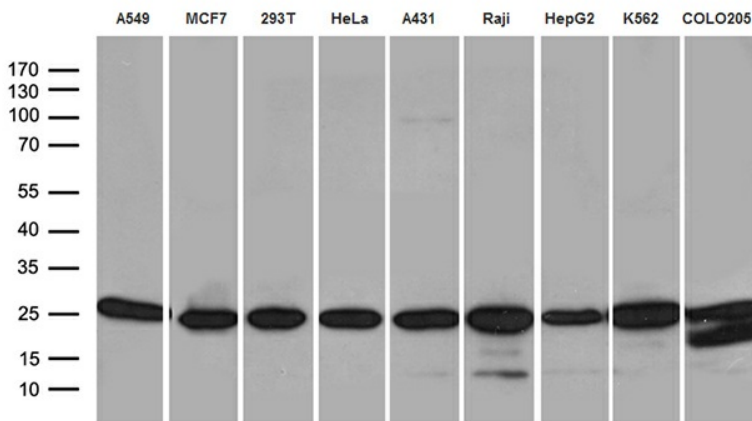


[View online »](#)

**Product images:**



HEK293T cells were transfected with the pCMV6-ENTRY control (Left lane) or pCMV6-ENTRY PSMA7 ([RC201169], Right lane) cDNA for 48 hrs and lysed. Equivalent amounts of cell lysates (5 ug per lane) were separated by SDS-PAGE and immunoblotted with anti-PSMA7 (1:2000). Positive lysates [LY400987] (100ug) and [LC400987] (20ug) can be purchased separately from OriGene.



Western blot analysis of extracts (35ug) from 9 different cell lines by using anti-PSMA7 monoclonal antibody (1:500).