

## Product datasheet for **TA810332**

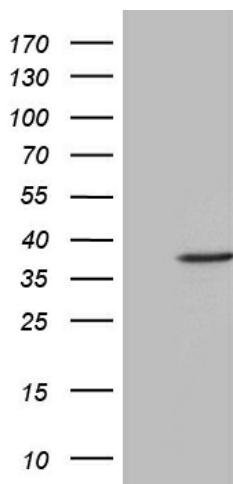
### **FBXO6 Mouse Monoclonal Antibody [Clone ID: OTI2C1]**

#### **Product data:**

Product Type:	Primary Antibodies
Clone Name:	OTI2C1
Applications:	WB
Recommended Dilution:	WB 1:2000
Reactivity:	Human
Host:	Mouse
Isotype:	IgG3
Clonality:	Monoclonal
Immunogen:	Full length human recombinant protein of human FBXO6 (NP_060908) produced in E.coli.
Formulation:	PBS (pH 7.3) containing 1% BSA, 50% glycerol and 0.02% sodium azide.
Concentration:	1 mg/ml
Purification:	Purified from mouse ascites fluids or tissue culture supernatant by affinity chromatography (protein A/G)
Conjugation:	Unconjugated
Storage:	Store at -20°C as received.
Stability:	Stable for 12 months from date of receipt.
Predicted Protein Size:	33.8 kDa
Gene Name:	F-box protein 6
Database Link:	<a href="#">NP_060908</a> <a href="#">Entrez Gene 26270 Human</a> <a href="#">Q9NRD1</a>
Synonyms:	FBG2; FBS2; FBX6; Fbx6b
Protein Families:	Druggable Genome



[View online »](#)

**Product images:**

HEK293T cells were transfected with the pCMV6-ENTRY control (Left lane) or pCMV6-ENTRY FBXO6 ([RC205063], Right lane) cDNA for 48 hrs and lysed. Equivalent amounts of cell lysates (5 ug per lane) were separated by SDS-PAGE and immunoblotted with anti-FBXO6 (1:2000). Positive lysates [LY412992] (100ug) and [LC412992] (20ug) can be purchased separately from OriGene.