

## Product datasheet for **TA810327S**

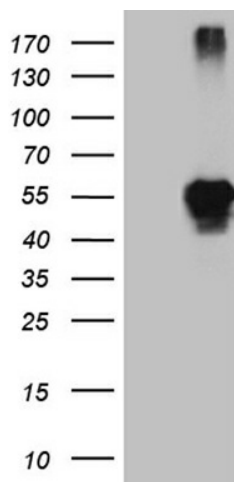
### LHX2 Mouse Monoclonal Antibody [Clone ID: OTI5C7]

#### Product data:

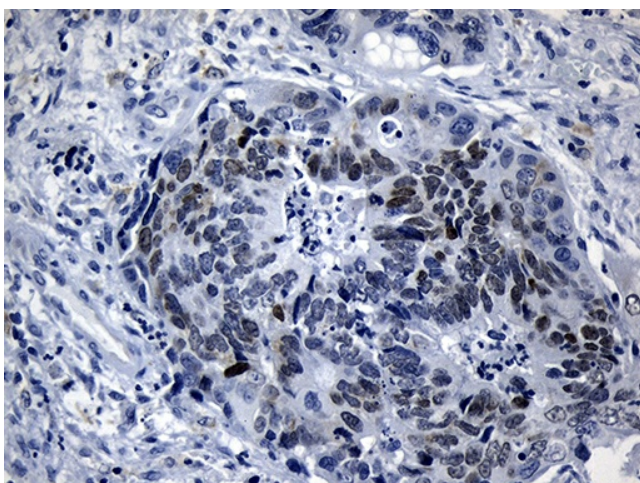
Product Type:	Primary Antibodies
Clone Name:	OTI5C7
Applications:	IHC, WB
Recommended Dilution:	WB 1:2000, IHC 1:150
Reactivity:	Human, Mouse, Rat
Host:	Mouse
Isotype:	IgG2a
Clonality:	Monoclonal
Immunogen:	Human recombinant protein fragment corresponding to amino acids 220-406 of human LHX2 (NP_004780) produced in E.coli.
Formulation:	PBS (pH 7.3) containing 1% BSA, 50% glycerol and 0.02% sodium azide.
Concentration:	1 mg/ml
Purification:	Purified from mouse ascites fluids or tissue culture supernatant by affinity chromatography (protein A/G)
Conjugation:	Unconjugated
Storage:	Store at -20°C as received.
Stability:	Stable for 12 months from date of receipt.
Predicted Protein Size:	44.2 kDa
Gene Name:	LIM homeobox 2
Database Link:	<a href="#">NP_004780</a> <a href="#">Entrez Gene 16870 Mouse</a> <a href="#">Entrez Gene 296706 Rat</a> <a href="#">Entrez Gene 9355 Human</a> <a href="#">P50458</a>
Synonyms:	hLhx2; LH2
Protein Families:	Transcription Factors



[View online »](#)

**Product images:**

HEK293T cells were transfected with the pCMV6-ENTRY control (Cat# [PS100001], Left lane) or pCMV6-ENTRY LHX2 (Cat# [RC210786], Right lane) cDNA for 48 hrs and lysed. Equivalent amounts of cell lysates (5 ug per lane) were separated by SDS-PAGE and immunoblotted with anti-LHX2 (1:2000) (Cat# [TA810327]). Positive lysates [LY401508] (100ug) and [LC401508] (20ug) can be purchased separately from OriGene.



Immunohistochemical staining of paraffin-embedded Adenocarcinoma of Human colon tissue using anti-LHX2 mouse monoclonal antibody. (Heat-induced epitope retrieval by 1mM EDTA in 10mM Tris buffer (pH8.5) at 120°C for 3min, [TA810327]) (1:150)