

## Product datasheet for **TA810318M**

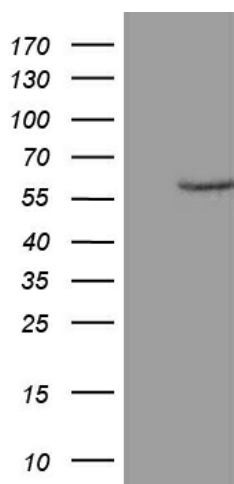
### **ZNF213 Mouse Monoclonal Antibody [Clone ID: OTI1A12]**

#### **Product data:**

Product Type:	Primary Antibodies
Clone Name:	OTI1A12
Applications:	WB
Recommended Dilution:	WB 1:200
Reactivity:	Human
Host:	Mouse
Isotype:	IgG1
Clonality:	Monoclonal
Immunogen:	Human recombinant protein fragment corresponding to amino acids 1-292 of human ZNF213 (NP_004211) produced in E.coli.
Formulation:	PBS (pH 7.3) containing 1% BSA, 50% glycerol and 0.02% sodium azide.
Concentration:	1 mg/ml
Purification:	Purified from mouse ascites fluids or tissue culture supernatant by affinity chromatography (protein A/G)
Conjugation:	Unconjugated
Storage:	Store at -20°C as received.
Stability:	Stable for 12 months from date of receipt.
Predicted Protein Size:	51.1 kDa
Gene Name:	zinc finger protein 213
Database Link:	<a href="#">NP_004211</a> <a href="#">Entrez Gene 7760 Human</a> <a href="#">O14771</a>
Synonyms:	CR53; ZKSCAN21; ZSCAN53
Protein Families:	Transcription Factors



[View online »](#)

**Product images:**


HEK293T cells were transfected with the pCMV6-ENTRY control (Left lane) or pCMV6-ENTRY ZNF213 ([RC203547], Right lane) cDNA for 48 hrs and lysed. Equivalent amounts of cell lysates (5 ug per lane) were separated by SDS-PAGE and immunoblotted with anti-ZNF213 (1:200). Positive lysates [LY418147] (100ug) and [LC418147] (20ug) can be purchased separately from OriGene.