

## Product datasheet for **TA810317BM**

### TANK Mouse Monoclonal Antibody (HRP conjugated) [Clone ID: OTI1G2]

#### Product data:

Product Type:	Primary Antibodies
Clone Name:	OTI1G2
Applications:	IHC, WB
Recommended Dilution:	WB 1:500~2000, IHC 1:500
Reactivity:	Human, Rat
Host:	Mouse
Isotype:	IgG1
Clonality:	Monoclonal
Immunogen:	Full length human recombinant protein of human TANK (NP_004171) produced in HEK293T cell.
Formulation:	PBS (pH 7.3) containing 1% BSA, 50% glycerol.
Concentration:	0.5 mg/ml
Purification:	Purified from mouse ascites fluids or tissue culture supernatant by affinity chromatography (protein A/G)
Conjugation:	HRP
Storage:	Store at -20°C as received.
Stability:	Stable for 12 months from date of receipt.
Predicted Protein Size:	47.6 kDa
Gene Name:	TRAF family member associated NFKB activator
Database Link:	<a href="#">NP_004171</a> <a href="#">Entrez Gene 252961 Rat</a> <a href="#">Entrez Gene 10010 Human</a> <a href="#">Q92844</a>



[View online »](#)

**Background:**

The TRAF (tumor necrosis factor receptor-associated factor) family of proteins associate with and transduce signals from members of the tumor necrosis factor receptor superfamily. The protein encoded by this gene is found in the cytoplasm and can bind to TRAF1, TRAF2, or TRAF3, thereby inhibiting TRAF function by sequestering the TRAFs in a latent state in the cytoplasm. For example, the protein encoded by this gene can block TRAF2 binding to LMP1, the Epstein-Barr virus transforming protein, and inhibit LMP1-mediated NF-kappa-B activation. Three alternatively spliced transcript variants encoding different isoforms have been found for this gene. [provided by RefSeq, Nov 2010]

**Synonyms:**

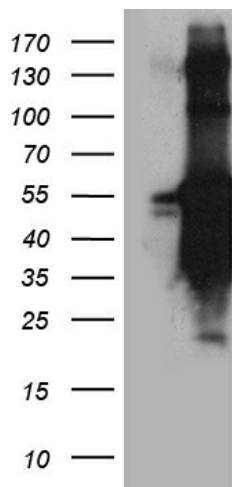
I-TRAF; ITRAF; TRAF2

**Protein Families:**

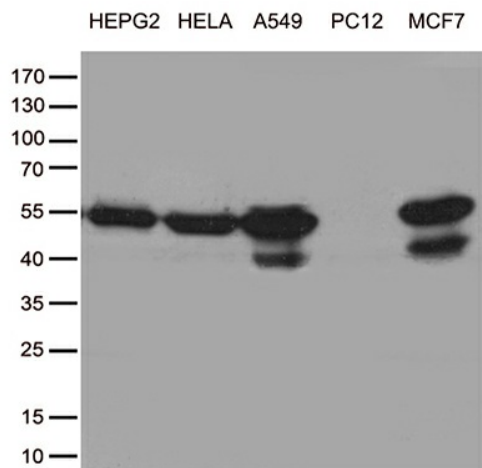
Druggable Genome

**Protein Pathways:**

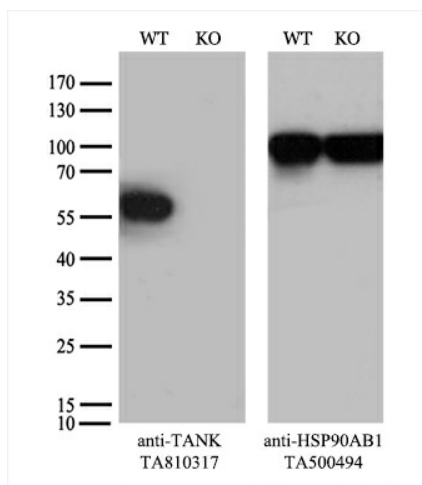
RIG-I-like receptor signaling pathway

**Product images:**


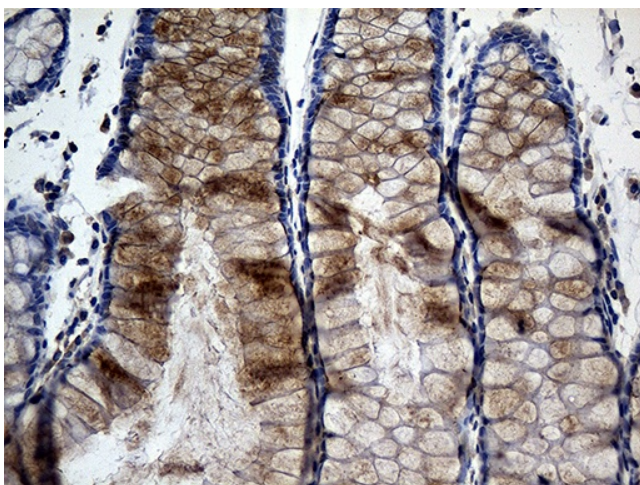
HEK293T cells were transfected with the pCMV6-ENTRY control (Cat# [PS100001], Left lane) or pCMV6-ENTRY TANK (Cat# [RC209759], Right lane) cDNA for 48 hrs and lysed. Equivalent amounts of cell lysates (5 ug per lane) were separated by SDS-PAGE and immunoblotted with anti-TANK (Cat# [TA810317]). Positive lysates [LY418162] (100ug) and [LC418162] (20ug) can be purchased separately from OriGene.



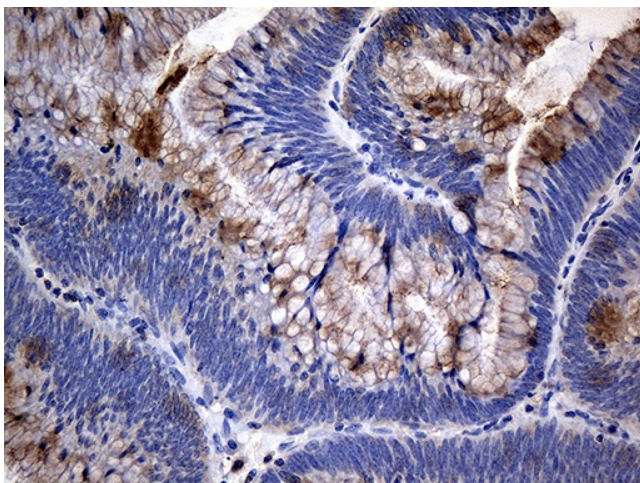
Western blot analysis of extracts (35ug) from cell lines by using anti-TANK monoclonal antibody (1:500).



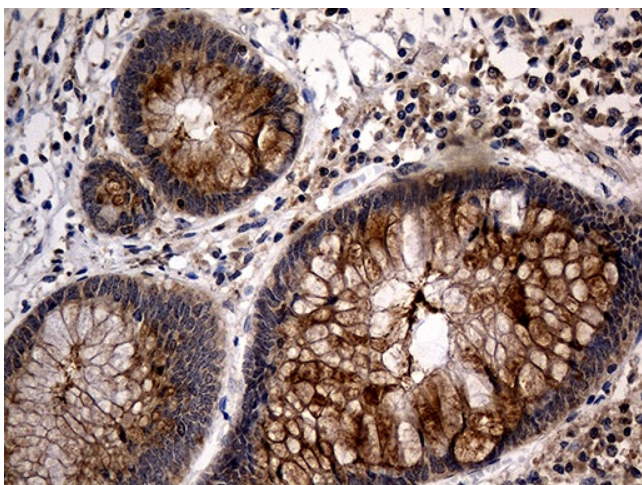
Equivalent amounts of cell lysates (10 ug per lane) of wild-type HeLa cells (WT, Cat# LC810HELA) and TANK-Knockout HeLa cells (KO, Cat# [LC810199]) were separated by SDS-PAGE and immunoblotted with anti-TANK monoclonal antibody [TA810317] (1:500). Then the blotted membrane was stripped and reprobed with anti-HSP90 antibody as a loading control.



Immunohistochemical staining of paraffin-embedded Human colon tissue within the normal limits using anti-TANK mouse monoclonal antibody. (Heat-induced epitope retrieval by 1mM EDTA in 10mM Tris buffer (pH8.5) at 120°C for 3min, [TA810317]) (1:500)



Immunohistochemical staining of paraffin-embedded Adenocarcinoma of Human colon tissue using anti-TANK mouse monoclonal antibody. (Heat-induced epitope retrieval by 1mM EDTA in 10mM Tris buffer (pH8.5) at 120°C for 3min, [TA810317]) (1:500)



Immunohistochemical staining of paraffin-embedded Human appendix tissue within the normal limits using anti-TANK mouse monoclonal antibody. (Heat-induced epitope retrieval by 1mM EDTA in 10mM Tris buffer (pH8.5) at 120°C for 3min, [TA810317]) (1:500)